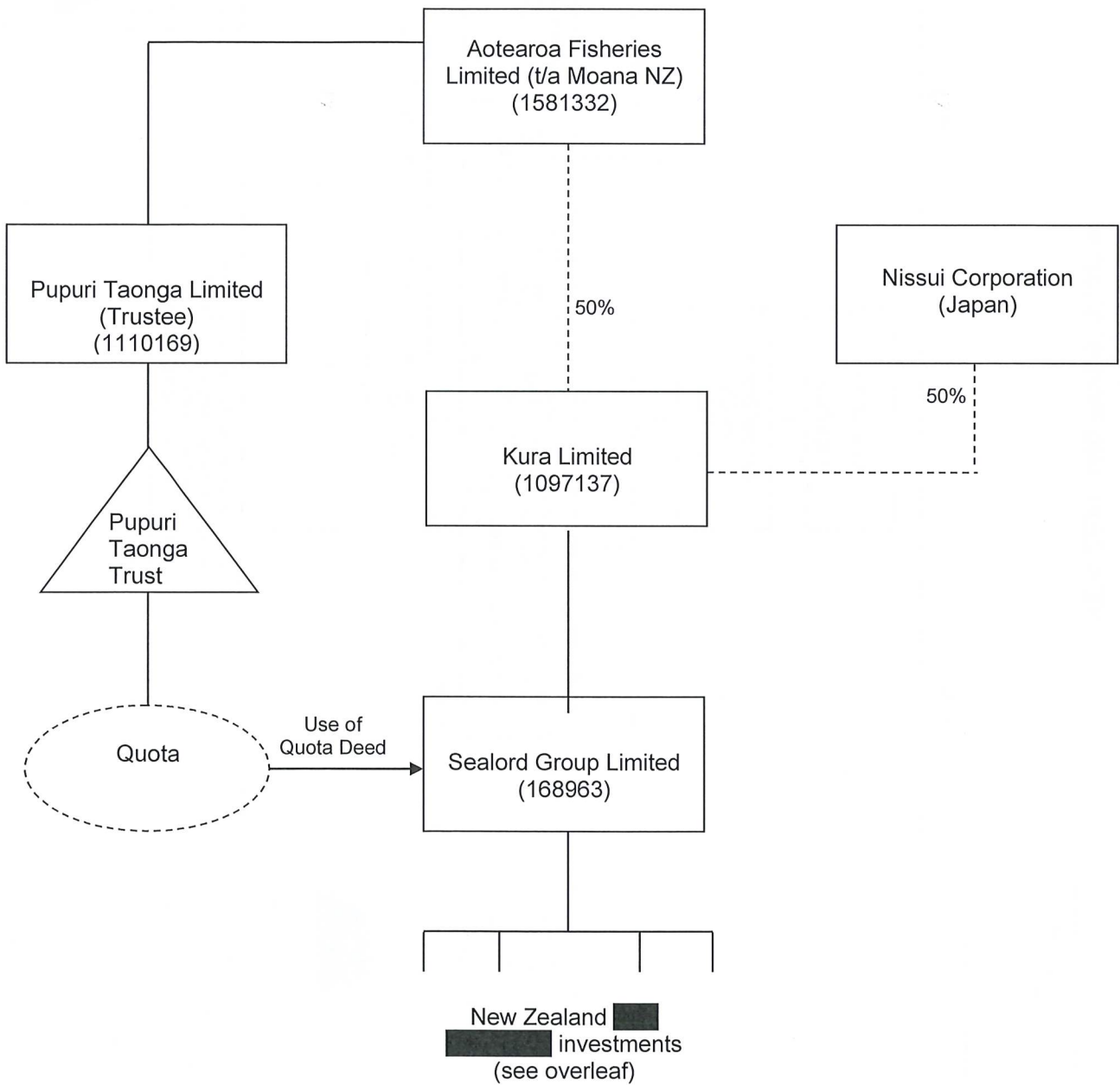


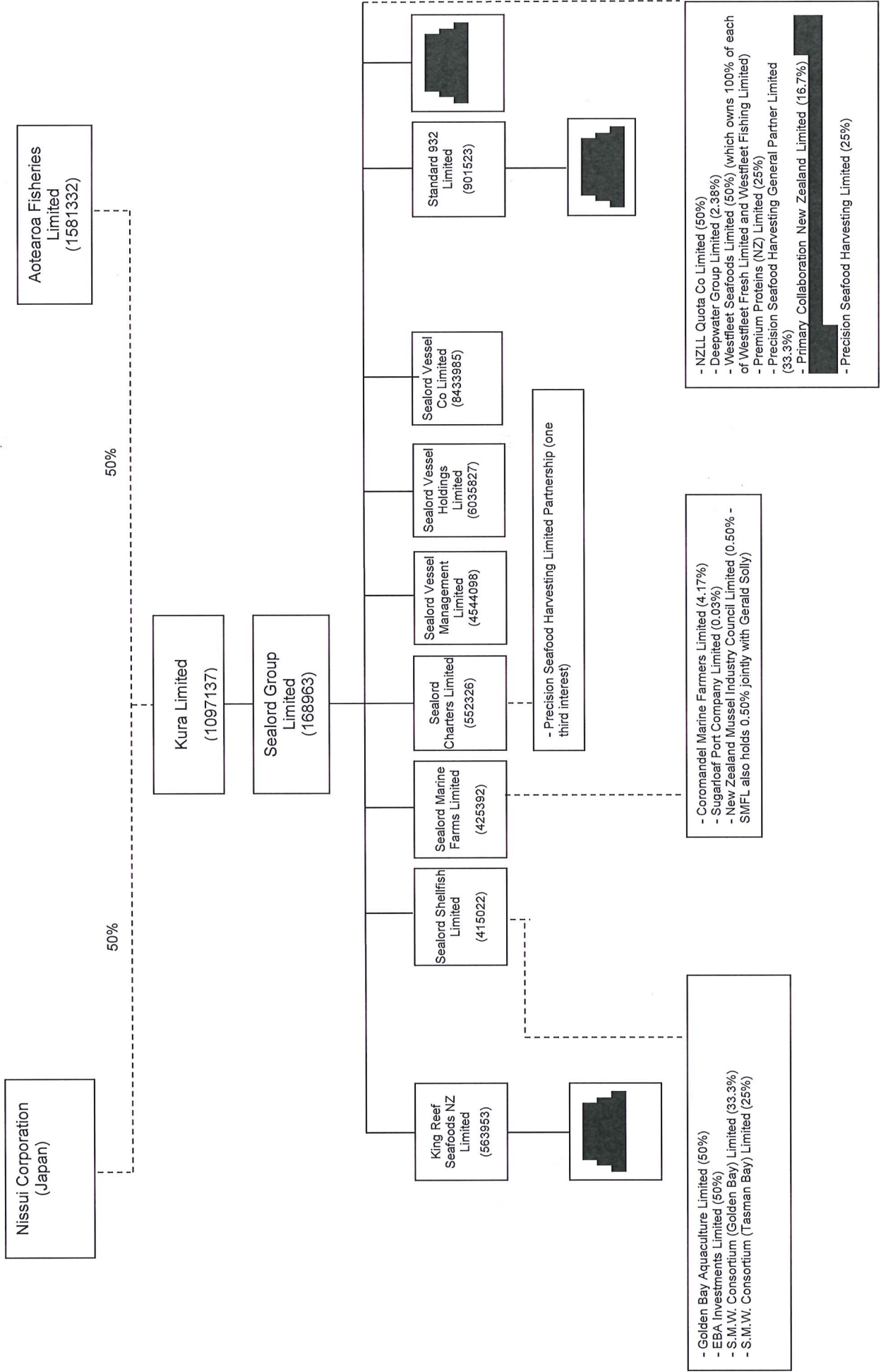
### SEALORD GROUP STRUCTURE CHART

Entities are 100% owned unless stated otherwise.

Entities are incorporated in New Zealand unless stated otherwise.

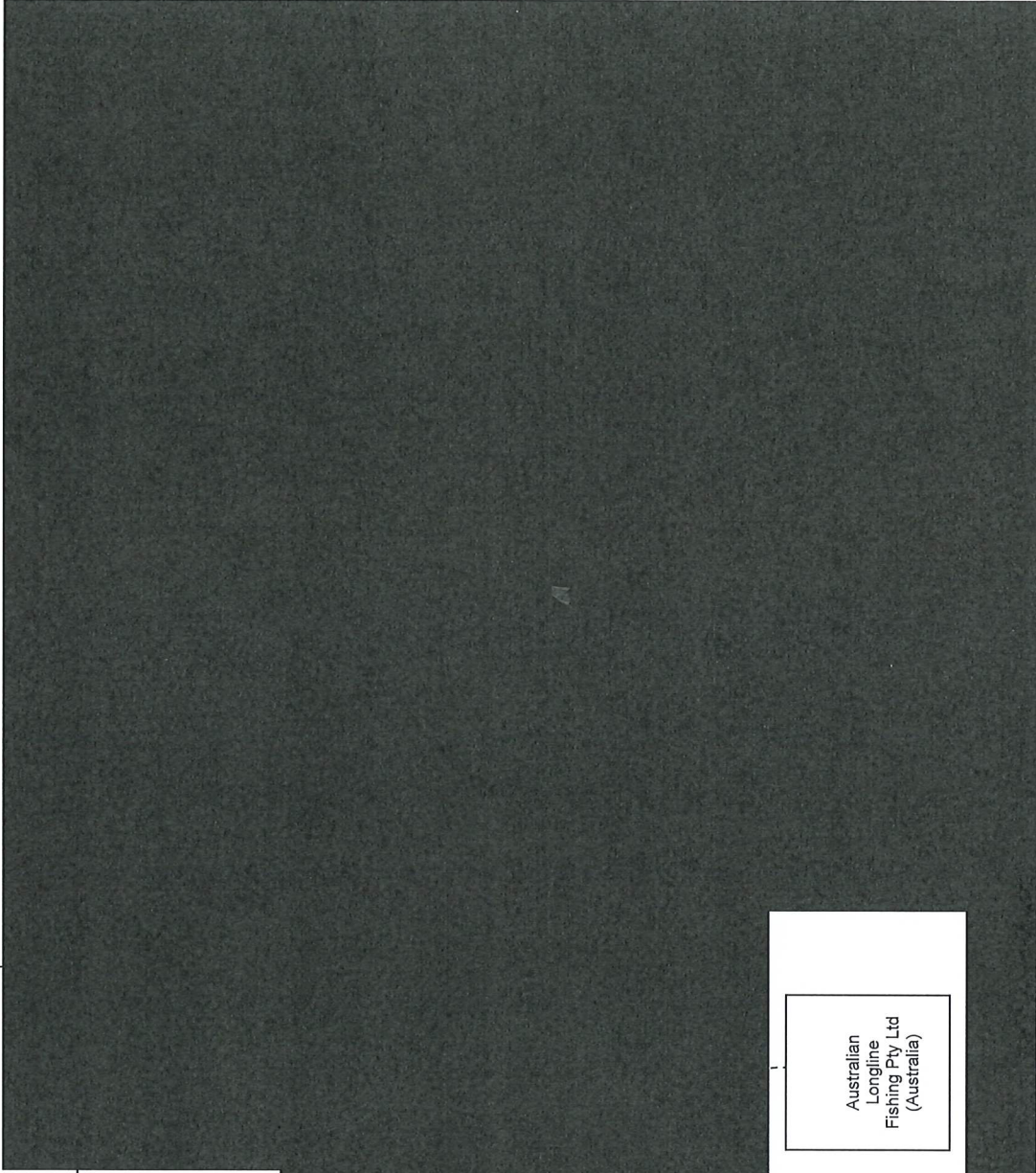


# NEW ZEALAND INVESTMENTS



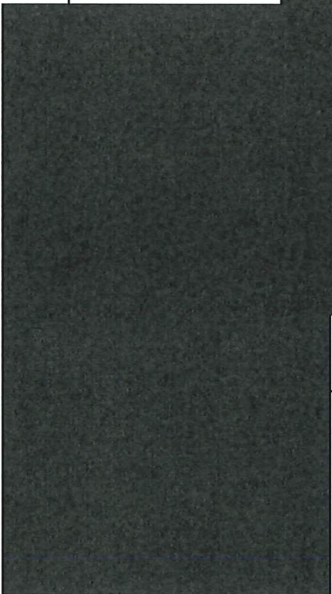


Sealord Group Limited  
(168963)



Petuna  
Aquaculture  
Pty Ltd  
(ACN  
009485581)

Australian  
Longline  
Fishing Pty Ltd  
(Australia)



Sealord  
King Reef  
Pty Limited  
(NSW)  
(ACN  
105576609)

Petuna Sealord  
Deepwater Fishing  
Pty Ltd  
(Australia)  
(ACN 107 697 290)

