

# **Standard Terms Determination for Chorus’ Unbundled Bitstream Access Backhaul Service**

## **Schedule 2: UBA Backhaul Price List**

**Date of determination:** 27 June 2008

Updated to incorporate Commerce Commission decisions, amendments, and clarifications through to 16 December 2022

## CONTENTS

<b>1. Introduction .....</b>	<b>3</b>
<b>2. Charges .....</b>	<b>3</b>
<b>3. UBA Backhaul Connection and Monthly Charges.....</b>	<b>4</b>
<b>4. Adjustment to Charges.....</b>	<b>6</b>
<b>Tables of UBA Backhaul Service Charges .....</b>	<b>7</b>
1. UBA Backhaul Service Transaction Charges .....	7
2. UBA Backhaul Service Recurring Charges.....	9
3. UBA Backhaul Ancillary Services.....	12
<b>Appendix A – UBA Backhaul Service Recurring Charges .....</b>	<b>14</b>
<b>Appendix B – Application of UBA Backhaul connection Charges and monthly rental Charges .....</b>	<b>15</b>

## 1. Introduction

- 1.1 This schedule sets out the Charges<sup>1</sup> for the UBA Backhaul Service and provides a mechanism to make adjustments to the Charges for Service Components.<sup>2</sup>
- 1.2 References to clauses or sections are references to clauses or sections in this UBA Backhaul Price List unless expressly provided otherwise. The definitions set out in the UBA Backhaul General Terms and the UBA Backhaul Operations Manual apply to the extent that they are not expressly modified by, or inconsistent with, the context of this UBA Backhaul Price List.

## 2. Charges

- 2.1 All Prices<sup>3</sup> are listed under the “Charge” column for each Service Component.
- 2.2 Charges for UBA Backhaul Service Components are described as being either a Core ('C') or Sundry ('S') Charge.
- 2.3 **Core Charges** are for the core components of the UBA Backhaul Service.
- 2.4 **Sundry Charges** are for other components of the UBA Backhaul Service.
- 2.5 Prices for Service Components are either:
  - 2.5.1 fixed; or
  - 2.5.2 calculated; or
  - 2.5.3 expressed as "Price on application" (**POA**). Prices that are POA must reflect the underlying cost of providing the resources and project management skills required to provide the Service Component.
- 2.6 For all Service Components that are POA, Chorus must, if requested by the Access Seeker, use all reasonable endeavours to provide the Access Seeker with two or more competitive quotes.
- 2.7 Charges will become due and payable and will be invoiced in the manner described in the “Charge invoiced” column for each Service Component.
- 2.8 The provisions in the UBA Backhaul General Terms relating to invoicing and payment of Charges apply.

---

<sup>1</sup> **Charge** is defined in the UBA Backhaul General Terms as “all or (as the context requires) any amounts payable by the Access Seeker under the UBA Backhaul Terms.” Charges in this schedule exclude GST.

<sup>2</sup> **Service Component** means a component of the UBA Backhaul Service, described in the rows of tables 1-3 below. Each Service Component has a description of the service, a Price Change Mechanism, invoicing detail and a Charge, which is identified as either Core or Sundry. Individual Service Components are referred to by the numerical reference number at the start of the row in which the Service Component is described.

<sup>3</sup> **Price** in this document means the dollar amount(s) attributed to a Service Component. A Price becomes a Charge when the Access Seeker requests/receives the Service. Prices in this schedule exclude GST.

- 2.9 All adjustments to Prices must be done in accordance with the relevant Price Change Mechanism listed in the “Price Change Mechanism” column for each Service Component.
- 2.10 Any adjustments to Charges for Service Components must be approved by the Commission.

### 3. UBA Backhaul Connection and Monthly Charges

- 3.1 The following clauses provide a detailed explanation about connection Charges (Service Components 1.1 and 1.2) and monthly Charges (Service Components 2.1 to 2.24):
- 3.2 For the purposes of this UBA Backhaul Price List:
- 3.2.1 A primary link means that part of the UBA Backhaul Service between the FDS Handover Point and the Parent POI Site (**Primary Link**). A secondary link means that part of the UBA Backhaul Service between the Parent POI Site and the ASNAPOI Handover Point (**Secondary Link**). A Link means a Primary Link and/or a Secondary Link; and
- 3.2.2 **FDS End** means the end located at the FDS. **ASNAPOI End** means the end located at the ASNAPOI. **One End** refers to either the FDS End or the ASNAPOI End, as the context requires. **Two Ends** refers to the FDS End and the ASNAPOI End.
- 3.3 The connection Charge for the UBA Backhaul Service (Service Components 1.1 and 1.2) varies depending on whether the Access Seeker requires connection at One End or Two Ends. The application of these Charges is not dependent on the distance groups in Appendix A or the applicable transmission capacities for the UBA Backhaul Service. Service Component 1.1 applies where the Access Seeker requires a new UBA Backhaul connection for Two Ends. In contrast, Service Component 1.2 applies where the Access Seeker requires a new UBA Backhaul connection for One End.
- 3.4 For the avoidance of doubt:
- 3.4.1 a Parent POI Site does not qualify as an End unless that Parent POI Site is an ASNAPOI;
- 3.4.2 a single connection Charge for the ASNAPOI End is payable by the Access Seeker regardless of how many Links the Access Seeker has ending at that ASNAPOI; and
- 3.4.3 the Access Seeker may purchase more than one Secondary Link between the same POI Site and the same ASNAPOI – see example 3 in Appendix B.
- 3.5 The monthly Charges for the Primary Link and the Secondary Link (Service Components 2.1 to 2.24) vary depending on the radial distance of the Link and the transmission capacity. There are six distance groups for each transmission capacity for the UBA Backhaul Service. The distance groups are set out in Appendix A and the

radial distances are set out in Schedule 5 of the UBA Backhaul General Terms. A list of the radial distances must also be made available to the Access Seekers via a secure Chorus web portal and must be regularly updated by Chorus.

3.6 The application of the monthly Charges for the Primary Link and the Secondary Link (Service Components 2.1 to 2.24) is illustrated in the following clauses.

3.7 Where the Access Seeker has:

3.7.1 a Primary Link that ends at the Parent POI Site;

3.7.2 a Secondary Link that starts at the same Parent POI Site; and

3.7.3 each Link has the same transmission capacity,

the Access Seeker pays a monthly Charge at that applicable capacity. The applicable radial distance is the sum of the radial distance from the FDS to the Parent POI Site and the radial distance from the Parent POI Site to the ASNAPOI.

3.8 Where the Access Seeker has:

3.8.1 a Primary Link that ends at the Parent POI Site;

3.8.2 a Secondary Link that starts at the same Parent POI Site; and

3.8.3 the Secondary Link has a different transmission capacity to the Primary Link,

the Access Seeker pays the applicable monthly Charge for each Link at the applicable capacity. The radial distance for the Primary Link is the radial distance from the FDS to the Parent POI Site and the radial distance for the Secondary Link is the radial distance from the Parent POI Site to the ASNAPOI.

3.9 Appendix B sets out examples relating to the application of the connection Charges (Service Components 1.1 and 1.2) and monthly Charges (Service Components 2.1 to 2.24).

3.10 In addition to the above requirements, UBA Backhaul Service Components 2.21 to 2.24 must be calculated in accordance with the following formula:  $\text{Price} = \exp\{4.6300 + (0.5071 \times \ln(\text{radial distance})) + (0.3858 \times \ln(\text{transmission capacity}))\}$  where "ln" means the natural log.<sup>4</sup>

---

<sup>4</sup> This formula can be calculated in Excel, using the exp() function with the ln(x) values of distance and transmission capacity.

## 4. Adjustment to Charges

4.1 Chorus must, subject to the approval of the Commission, increase or decrease Prices as follows:

4.1.1 Each year, on or before 1 November, or such other date approved by the Commission in a particular year, Chorus must calculate adjustments to the Prices relating to those Service Components where this clause is the prescribed Price Change Mechanism below. Those adjustments must be by an amount equivalent to the percentage change (up or down) for the previous year in the Consumer Price Index (All groups) Series Reference CPIQ.SE9A as published by Statistics New Zealand.<sup>5</sup>

For the purpose of this clause 4.1.1 the annual percentage change between the previous year's September index number and the current year's September index number must be used.<sup>6</sup>

4.1.2 When adjusting Prices under clause 4.1, Chorus must review all Service Components which are POA and calculate a fixed Price where this is practicable.

4.2 Once an adjustment or new fixed Price has been calculated under clause 4.1, Chorus must give notice to the Commission of the adjustment. The notice must include:

4.2.1 the figures used in the calculation for the adjustment; and

4.2.2 the calculations undertaken for the adjustment.

4.3 The Commission must approve or decline a proposed adjustment notified by Chorus under clause 4.2 within 20 Working Days.

4.4 After an adjustment has been approved by the Commission, Chorus must:

4.4.1 notify Access Seekers of the adjustment; then

4.4.2 activate the new Charge arising from the adjustment in its billing systems as at 16 December of the applicable year.

---

<sup>5</sup> As required by s 69AG of the Telecommunications Act 2001. This requirement was inserted in the Telecommunications (New Regulatory Framework) Amendment Act 2018.

<sup>6</sup> Under the Act, an **annual CPI adjustment** means, in relation to a price, an annual adjustment to the price that is equal to any percentage movement in the CPI as measured between— (a) the CPI for the quarter that ended most recently before the price adjustment; and (b) the CPI for the equivalent quarter in the preceding year.

## Tables of UBA Backhaul Service Charges

### 1. UBA Backhaul Service Transaction Charges

Service Component	Description	Core or Sundry	Charge invoiced	Price Change Mechanism	Charge (excl. GST)
1.1 UBA Backhaul Service New Connection – Two Ends	The establishment of a UBA Backhaul Service new connection at Two Ends. Connection only	C	Following notification by Chorus of completion of Order	Clause 4.1.1	\$9,199.21
1.2 UBA Backhaul Service New Connection – One End	The establishment of a UBA Backhaul Service new connection at One End. Connection only	C	Following notification by Chorus of completion of Order	Clause 4.1.1	\$4,600.18
1.3 Access Seeker Handover Connection Installation – GigE Capacity	Standard installation of a Handover Connection – GigE capacity	S	On completion of installation	Clause 4.1.1	\$639.38
1.4 Handover Fibre Installation	Chorus installing the Access Seeker's Handover Fibre (which is interconnected with the Handover Connection) between the exchange manhole and the OFDF. (See full requirements in UBA Backhaul Operations Manual)	S	Following notification by Chorus of completion of Order	None	Price on Application ( <b>POA</b> )  Based on cost of time and materials (including a 10% contribution towards common costs unless already recovered)
1.5 Relinquishment of Access Seeker Handover Connection or Handover Fibre	Relinquishment of an existing Access Seeker Handover Connection or Handover Fibre. Covers time and materials to remove existing Handover Connection or Handover Fibre and associated cables and equipment	S	On completion of relinquishment	None	Price on Application ( <b>POA</b> )  Basis for determining the charge is based on recovery of costs incurred (including 10% contribution towards common costs unless already recovered)
1.6 UBA Backhaul Service Network Change Order	Project management and coordination of Network Change Orders. Where necessary, the Access Seeker will also be responsible separately for any relevant new connection or relinquishment	S	On completion of Change Order	Clause 4.1.1	\$137.41 per hour  Pricing reflects the fully allocated cost of project management

Service Component	Description	Core or Sundry	Charge invoiced	Price Change Mechanism	Charge (excl. GST)
1.7 UBA Backhaul Service Speed Change Order	Changing the transmission capacity of an existing connection when only a reconfiguration is required	S	Following completion of work	Clause 4.1.1	\$358.45
1.8 UBA Backhaul Service Connection Relinquishment	Where the Access Seeker terminates supply of a UBA Backhaul Service connection	C	Following notification by Chorus of completion of Order	None	\$0.00



## 2. UBA Backhaul Service Recurring Charges

Service Component	Description	Core or Sundry	Charge invoiced	Price Change Mechanism	Charge (excl. GST)
2.1 UBA Backhaul Service - 50Mbps – Distance Group 1*	UBA Backhaul Service - 50Mbps – Distance Group 1*	C	Monthly in advance from completion of Order	Clause 4.1.1	\$842.42
2.2 UBA Backhaul Service - 100Mbps – Distance Group 1*	UBA Backhaul Service - 100Mbps – Distance Group 1*	C	Monthly in advance from completion of Order	Clause 4.1.1	\$1,100.40
2.3 UBA Backhaul Service - 200Mbps – Distance Group 1*	UBA Backhaul Service - 200Mbps – Distance Group 1*	C	Monthly in advance from completion of Order	Clause 4.1.1	\$1,438.28
2.4 UBA Backhaul Service – 1Gbps – Distance Group 1*	UBA Backhaul Service – 1Gbps – Distance Group 1*	C	Monthly in advance from completion of Order	Clause 4.1.1	\$2,675.64
2.5 UBA Backhaul Service - 50Mbps – Distance Group 2*	UBA Backhaul Service - 50Mbps – Distance Group 2*	C	Monthly in advance from completion of Order	Clause 4.1.1	\$1,470.23
2.6 UBA Backhaul Service - 100Mbps – Distance Group 2*	UBA Backhaul Service - 100Mbps – Distance Group 2*	C	Monthly in advance from completion of Order	Clause 4.1.1	\$1,921.12
2.7 UBA Backhaul Service - 200Mbps – Distance Group 2*	UBA Backhaul Service - 200Mbps – Distance Group 2*	C	Monthly in advance from completion of Order	Clause 4.1.1	\$2,510.13
2.8 UBA Backhaul Service – 1Gbps – Distance Group 2*	UBA Backhaul Service – 1Gbps – Distance Group 2*	C	Monthly in advance from completion of Order	Clause 4.1.1	\$4,669.82
2.9 UBA Backhaul Service - 50Mbps – Distance Group 3*	UBA Backhaul Service - 50Mbps – Distance Group 3*	C	Monthly in advance from completion of Order	Clause 4.1.1	\$1,905.14

Service Component	Description	Core or Sundry	Charge invoiced	Price Change Mechanism	Charge (excl. GST)
2.10 UBA Backhaul Service - 100Mbps – Distance Group 3*	UBA Backhaul Service - 100Mbps – Distance Group 3*	C	Monthly in advance from completion of Order	Clause 4.1.1	\$2,489.58
2.11 UBA Backhaul Service - 200Mbps – Distance Group 3*	UBA Backhaul Service - 200Mbps – Distance Group 3*	C	Monthly in advance from completion of Order	Clause 4.1.1	\$3,252.10
2.12 UBA Backhaul Service – 1Gbps – Distance Group 3*	UBA Backhaul Service – 1Gbps – Distance Group 3*	C	Monthly in advance from completion of Order	Clause 4.1.1	\$6,051.01
2.13 UBA Backhaul Service - 50Mbps – Distance Group 4*	UBA Backhaul Service - 50Mbps – Distance Group 4*	C	Monthly in advance from completion of Order	Clause 4.1.1	\$2,259.01
2.14 UBA Backhaul Service - 100Mbps – Distance Group 4*	UBA Backhaul Service - 100Mbps – Distance Group 4*	C	Monthly in advance from completion of Order	Clause 4.1.1	\$2,951.87
2.15 UBA Backhaul Service - 200Mbps – Distance Group 4*	UBA Backhaul Service - 200Mbps – Distance Group 4*	C	Monthly in advance from completion of Order	Clause 4.1.1	\$3,857.07
2.16 UBA Backhaul Service – 1Gbps – Distance Group 4*	UBA Backhaul Service – 1Gbps – Distance Group 4*	C	Monthly in advance from completion of Order	Clause 4.1.1	\$7,176.50
2.17 UBA Backhaul Service - 50Mbps – Distance Group 5*	UBA Backhaul Service - 50Mbps – Distance Group 5*	C	Monthly in advance from completion of Order	Clause 4.1.1	\$2,567.20
2.18 UBA Backhaul Service - 100Mbps – Distance Group 5*	UBA Backhaul Service - 100Mbps – Distance Group 5*	C	Monthly in advance from completion of Order	Clause 4.1.1	\$3,353.68

Service Component	Description	Core or Sundry	Charge invoiced	Price Change Mechanism	Charge (excl. GST)
2.19 UBA Backhaul Service - 200Mbps – Distance Group 5*	UBA Backhaul Service - 200Mbps – Distance Group 5*	C	Monthly in advance from completion of Order	Clause 4.1.1	\$4381.00
2.20 UBA Backhaul Service – 1Gbps – Distance Group 5*	UBA Backhaul Service – 1Gbps – Distance Group 5*	C	Monthly in advance from completion of Order	Clause 4.1.1	\$8,152.46
2.21 UBA Backhaul Service - 50Mbps – Distance Group 6*	UBA Backhaul Service - 50Mbps – Distance Group 6*	C	Monthly in advance from completion of Order	Clause 4.1.1	$1.1367^* \times \text{Exponential of } [4.6300 + (0.5071 \times \ln(\text{radial distance})) + (0.3858 \times \ln(50))]$
2.22 UBA Backhaul Service - 100Mbps – Distance Group 6*	UBA Backhaul Service - 100Mbps – Distance Group 6*	C	Monthly in advance from completion of Order	Clause 4.1.1	$1.1367^* \times \text{Exponential of } [4.6300 + (0.5071 \times \ln(\text{radial distance})) + (0.3858 \times \ln(100))]$
2.23 UBA Backhaul Service - 200Mbps – Distance Group 6*	UBA Backhaul Service - 200Mbps – Distance Group 6*	C	Monthly in advance from completion of Order	Clause 4.1.1	$1.1367^* \times \text{Exponential of } [4.6300 + (0.5071 \times \ln(\text{radial distance})) + (0.3858 \times \ln(200))]$
2.24 UBA Backhaul Service – 1Gbps – Distance Group 6*	UBA Backhaul Service – 1Gbps – Distance Group 6*	C	Monthly in advance from completion of Order	Clause 4.1.1	$1.1367^* \times \text{Exponential of } [4.6300 + (0.5071 \times \ln(\text{radial distance})) + (0.3858 \times \ln(1000))]$
2.25 Access Seeker Handover Connection Monthly Rental – GigE capacity	Standard Monthly rental for an Access Seeker Handover Connection– GigE capacity	S	Monthly in advance from completion of Order	Clause 4.1.1	\$101.06
2.26 Handover Fibre Space Rental	Monthly space rental for Handover Fibre co-located on Chorus property	C	Monthly in advance from completion of Order	Clause 4.1.1	\$30.94

\* The Distance Groups are defined in Appendix A – UBA Backhaul Recurring Charges.

### 3. UBA Backhaul Ancillary Services

Service Component	Description	Core or Sundry	Charge invoiced	Price Change Mechanism	Charge (excl. GST)
3.1 No Fault Found	Fault call that is closed no Chorus fault found	S	Following completion of fault investigation	Clause 4.1.1	\$152.26
3.2 Additional OO&T Training	Access Seeker staff training (at Access Seeker's site) on the operation and use of OO&T. Maximum of ten persons per course	S	Following completion of training	Clause 4.1.1	\$137.41 per hour plus actual travel costs (as applicable, the costs of airplane flights, public transport fares, taxi fares and standard mileage rates for motor vehicles as published by Inland Revenue) to Access Seeker's site. Hourly rate reflects fully loaded cost of skilled employee to run training
3.3 Additional OFM Training	Access Seeker staff training (at Access Seeker's site) on the operation and use of OFM. Maximum of ten persons per course	S	Following completion of training	Clause 4.1.1	\$137.41 per hour plus actual travel costs (as applicable, the costs of airplane flights, public transport fares, taxi fares and standard mileage rates for motor vehicles as published by Inland Revenue) to Access Seeker's site. Hourly rate reflects fully loaded cost of skilled employee to run training
3.4 OO&T Licence Fee	Monthly software licence fee for OO&T	S	Monthly in advance	Clause 4.1.1	\$27.40 per Access Seeker per month
3.5 OFM Licence Fee	Monthly software licence fee for OFM	S	Monthly in advance	Clause 4.1.1	\$27.40 per Access Seeker per month

Service Component	Description	Core or Sundry	Charge invoiced	Price Change Mechanism	Charge (excl. GST)
3.6 Additional Copies of invoice	Additional hardcopies of invoices as requested by Access Seeker	S	Following provision of additional copies of invoice	Clause 4.1.1	\$137.41 per invoice  Based on per line itemisation and average forecast invoice length plus estimated time and materials of person to prepare and courier cost
3.7 Additional Billing information	Providing any additional billing information requested by the Access Seeker	S	On provision of the additional billing information	None	Price on Application ( <b>POA</b> )  Based on time and material of analyst to prepare and deliver information
3.8 Cancellation (Pre Truck Roll)	Cancellation of an Order after RFS date notified to Access Seeker but before truck roll confirmed	S	Upon cancellation	Clause 4.1.1	\$6.04  Pricing reflects administration cost and time plus a 10% mark-up to cover common costs
3.9 Cancellation (Post Truck Roll)	Cancellation of an Order after RFS date notified to Access Seeker and after truck roll confirmed	S	Upon cancellation	Clause 4.1.1	\$122.72
3.10 Handover Fibre Maintenance	Maintenance and fault repair of the Handover Fibre	S	Following completion of work	None	\$0.00
3.11 Fixing fault where Access Seeker has no right of access	Fixing of fault by Chorus, at Access Seeker's request, where Access Seeker is responsible for the fault, but has no right of access.	S	On completion of fault rectification	None	Price on Application ( <b>POA</b> )  Based on cost of time and materials (including a 10% contribution towards common costs, unless already recovered)

## Appendix A – UBA Backhaul Service Recurring Charges

### Table of Distance Groupings

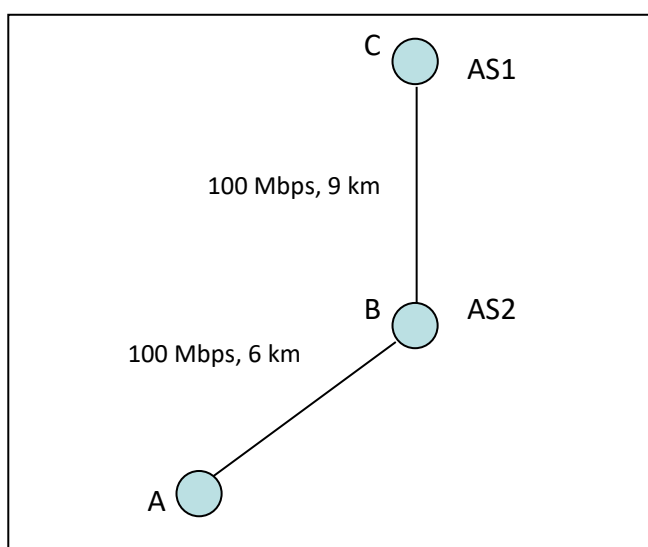
Distance Group	Radial Distance
1	0 km < radial distance ≤ 5 km
2	5 km < radial distance ≤ 10 km
3	10 km < radial distance ≤ 15 km
4	15 km < radial distance ≤ 20 km
5	20 km < radial distance ≤ 25 km
6	radial distance > 25 km

## Appendix B – Application of UBA Backhaul connection Charges and monthly rental Charges

This Appendix sets out a number of examples explaining how the connection Charges (Service Components 1.1 and 1.2) and monthly Charges (Service Components 2.1 to 2.24) will be applied under this STD.

### Example 1:

In this example, the Access Seeker requires the same capacity on both the Primary and the Secondary Link of the UBA Backhaul Service.



*Note: The radial distances from A – B and B – C must be calculated separately and added together to determine the applicable distance group for the Links from A – C.*

### Access Seeker 1

Access Seeker 1 (AS1) receives a EUBA Service at FDS A with Chorus as the Access Provider. The Parent POI Site is at B and C is an ASNAPOI for AS1. In this example, the applicable monthly rental Charge and connection Charges are as follows:

Monthly Rental Charge A-C (100 Mbps, 15 km):	Service Component 2.10: UBA Backhaul Service – 100 Mbps – Distance Group 3
Total Connection Charge (A, C):	Service Component 1.1: UBA Backhaul Service New Connection – Two ends

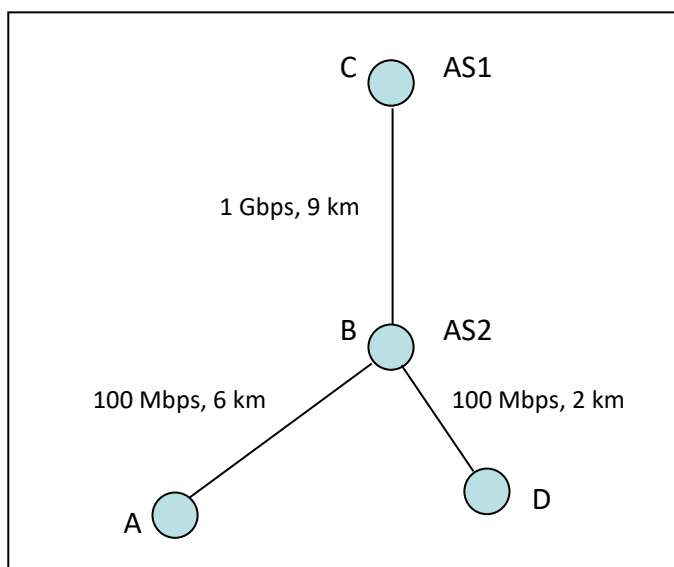
### Access Seeker 2

Access Seeker 2 (AS2) receives a EUBA Service at FDS A with Chorus as the Access Provider. The Parent POI Site is at B and B is an ASNAPOI for AS2. In this example, the applicable monthly rental Charges and connection Charges are as follows:

Monthly Rental Charge A-B (100 Mbps, 6 km):	Service Component 2.6: UBA Backhaul Service – 100 Mbps – Distance Group 2
Total Connection Charge (A, B):	Service Component 1.1: UBA Backhaul Service New Connection – Two ends

## Example 2:

In this example, the Access Seeker requires different capacity on the Primary Link and the Secondary Link of the UBA Backhaul Service.



*Note: The radial distances from A – B, B – C and D – B must be calculated separately to determine the applicable distance group for each Link.*

### Access Seeker 1

Access Seeker 1 (AS1) receives a EUBA Service at FDSs A and D with Chorus as the Access Provider. The Parent POI Site is at B and C is an ASNAPOI for AS1. In this example, the applicable monthly rental Charges and connection Charges are as follows:

Monthly rental Charge A-B (100 Mbps, 6 km):  
 Monthly rental Charge D-B (100 Mbps, 2 km):  
 Monthly rental Charge B-C (1 Gbps, 9 km):  
 Connection Charge (A, C):  
 Connection Charge (D):

Service Component 2.6: UBA Backhaul Service – 100 Mbps – Distance Group 2  
 Service Component 2.2: UBA Backhaul Service – 100 Mbps – Distance Group 1  
 Service Component 2.8: UBA Backhaul Service – 1 Gbps – Distance Group 2  
 Service Component 1.1: UBA Backhaul Service New Connection – Two Ends  
 Service Component 1.2: UBA Backhaul Service New Connection – One End

### Access Seeker 2

Access Seeker 2 (AS2) receives a EUBA Service at FDSs A and D with Chorus as the Access Provider. The Parent POI Site is at B and B is an ASNAPOI for AS2. In this example, the applicable monthly rental Charges and connection Charges are as follows:

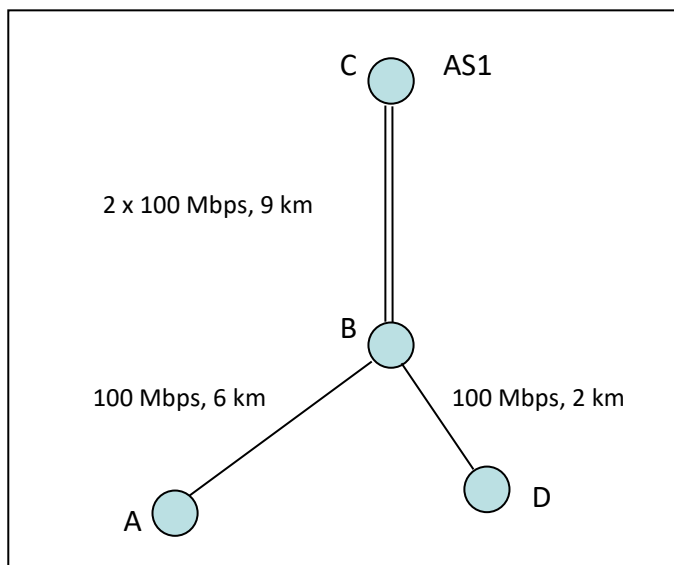
Monthly Rental Charge A-B (100 Mbps, 6 km):  
 Monthly Rental Charge D-B (100 Mbps, 2 km):  
 Connection Charge (A, B):  
 Connection Charge (D):

Service Component 2.6: UBA Backhaul Service – 100 Mbps – Distance Group 2  
 Service Component 2.2: UBA Backhaul Service – 100 Mbps – Distance Group 1  
 Service Component 1.1: UBA Backhaul Service New Connection – Two Ends  
 Service Component 1.2: UBA Backhaul Service New Connection – One End



### Example 3:

In this example, the Access Seeker requires the same capacity on the Primary Links and the Secondary Links of the UBA Backhaul Service.



*Note: The radial distances from A – B and B – C must be calculated separately and added together to determine the distance for the Links from A – C. Similarly, the radial distances from D – B and B – C must be calculated separately and added together to determine the applicable distance group for the Links from D – C.*

#### Access Seeker 1

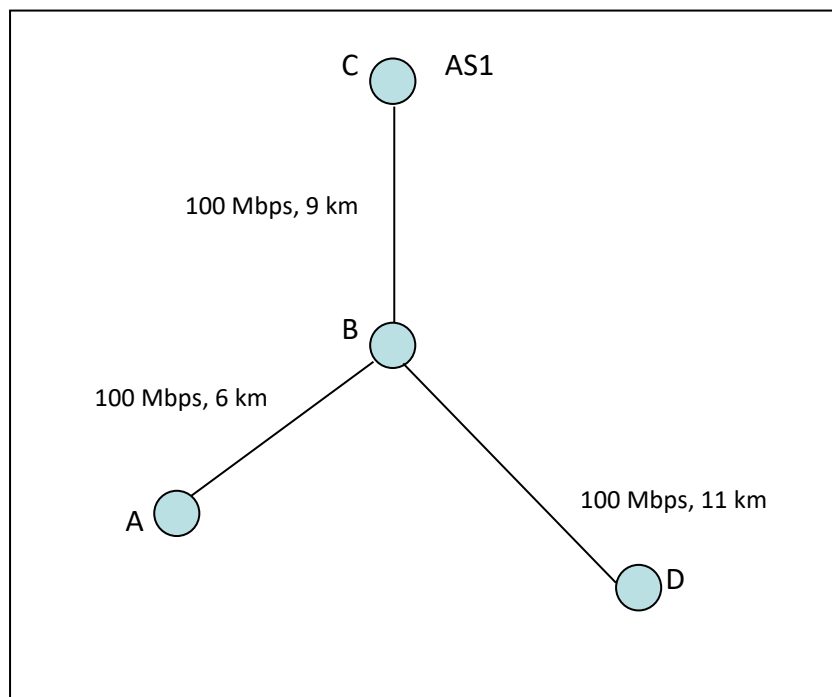
Access Seeker 1 (AS1) receives a EUBA Service at FDSs A and D from Chorus as the Access Provider. The Parent POI Site is at B and C is an ASNAPOI for AS1. In this example, AS1 purchases two Secondary Links to ensure that it has sufficient capacity to carry traffic on the Primary Links. The Links from A -- C comprises a Primary Link from A – B and a Secondary Link from B – C. The Links from D -- C comprises a Primary Link from D – B and a Secondary Link from B – C. Where AS1 purchases Links from A-C and from D-C, the applicable monthly rental Charges and connection Charges are as follows:

Monthly rental Charge A-C (100 Mbps, 15 km):	Service Component 2.10: UBA Backhaul Service – 100 Mbps – Distance Group 3
Monthly rental Charge D-C (100 Mbps, 11 km):	Service Component 2.10: UBA Backhaul Service – 100 Mbps – Distance Group 3
Connection Charge (A, C):	Service Component 1.1: UBA Backhaul Service New Connection – Two Ends
Connection Charge (D):	Service Component 1.2: UBA Backhaul Service New Connection – One End <sup>7</sup>

<sup>7</sup> Decision No 654 (19 September 2008).

#### Example 4:<sup>8</sup>

In this example, the Access Seeker requires the same capacity on both the Primary and the Secondary Link of the UBA Backhaul Service. The Access Seeker initially purchases a Primary Link A-B together with a Secondary Link from B-C, and subsequently purchases a Primary Link D-B.



*Note: the radial distances from A – B and B – C must be calculated separately and added together (as these are the links that were first purchased) to determine the applicable distance group for the Links from A – C. The radial distance from D-B is then used to determine the applicable distance group for the Link from D – B.*

#### Access Seeker 1

Access Seeker 1 (AS1) initially receives a EUBA Service at FDS A with Chorus as the Access Provider. The Parent POI Site is at B and C is an ASNAPOI for AS1. The Access Seeker subsequently receives a EUBA Service at a second FDS, located at D. In this example, the applicable monthly rental Charges and connection Charges are calculated as follows:

Monthly rental Charge A-C (100 Mbps, 15 km):	Service Component 2.10: UBA Backhaul Service – 100 Mbps – Distance Group 3
Monthly rental Charge D-B (100 Mbps, 11 km):	Service Component 2.10: UBA Backhaul Service – 100 Mbps – Distance Group 3
Connection Charge (A, C):	Service Component 1.1: UBA Backhaul Service New Connection – Two Ends
Connection Charge (D):	Service Component 1.2: UBA Backhaul Service New Connection – One End

<sup>8</sup> Decision No 654 (19 September 2008).

### *Contemporaneous Purchase*

If the Access Seeker purchased the above two Primary Links A-B and D-B and the Secondary Link B-C contemporaneously,<sup>9</sup> submitted under clause 9.2 of the UBA Backhaul Operations Manual, (and where all Links are of the same bandwidth), the monthly rental Charge shall be calculated so as to minimise the monthly cost to the Access Seeker. The calculation and selection of the Primary Link and Secondary Link combination that minimises cost to the Access Seeker will be the responsibility of the Access Seeker. Chorus Wholesale will implement the link combination as specified on the order forms.

In the above example, the Primary Link D-B would be combined with the Secondary Link B-C, with the Primary Link A-B priced incrementally.

Monthly rental Rate D-C (100 Mbps, 20 km):  
Monthly rental Rate A-B (100 Mbps, 6 km):  
Connection Charge (D, C):  
Connection Charge (A):

Service Component 2.14: UBA Backhaul Service – 100 Mbps – Distance Group 4  
Service Component 2.6: UBA Backhaul Service – 100 Mbps – Distance Group 2  
Service Component 1.1: UBA Backhaul Service New Connection – Two Ends  
Service Component 1.2: UBA Backhaul Service New Connection – One End

---

<sup>9</sup> The two links to be combined must be included on the same order form and the third link should be submitted on a separate order form in accordance with the UBA Backhaul Operations Manual. We note that updates to Orders may be made in accordance with clause 9.10 of the UBA Backhaul Operations Manual.