

Wellington Electricity's earthquake readiness plan

WELL delivers electricity to approximately

166,000

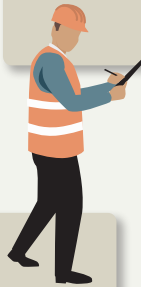
homes, businesses and government agencies in and around Wellington



We're allowing WELL to spend an additional

\$31 million

to make its network more earthquake resilient including strengthening substations and buying emergency equipment and spares



Consumer bill impact

We expect the average consumer's bill of \$185 a month will

increase by \$1.70.

However, the total price a consumer pays also depends on other components including generation, transmission, and retail.

Our monitoring

If WELL does not make the improvements, money will be returned to customers through lower prices

