



Draft

**STANDARD TERMS DETERMINATION FOR CHORUS' UNBUNDLED
BITSTREAM ACCESS BACKHAUL SERVICE**

Comment [A1]: The reasons for updating this document are described in *Section 30R Reviews of seven regulated telecommunications services' Standard Terms Determinations (STDs) Price Lists*. For each meaningful change we have identified the relevant paragraph in this document.

**SCHEDULE 2
UBA BACKHAUL PRICE LIST
PUBLIC VERSION**

27 June 2008

Comment [A2]: 11.3: Standardisation

Updated to incorporate Commerce Commission decisions, amendments, and clarifications through to
10 April 2017

Determination version history		
Determination date	Decision No.	Determination name
27 June 2008	627	Standard Terms Determination for the designated service Chorus' unbundled bitstream access backhaul
19 September 2008	654	Clarification of the Standard Terms Determination Telecom's Unbundled Bitstream Access Backhaul Service
5 March 2009	665	Clarification of the Standard Terms Determinations on Telecom's Unbundled Copper Local Loop Network Backhaul (Telephone Exchange to Interconnection Point) Service and Unbundled Bitstream Access Backhaul Service
8 July 2009	n/a	Approval of Annual Adjustment to Charges for Labour or Input Costs and Price on Application (POA) Charges and Review of Service Level Terms
8 April 2010	n/a	Approval of Annual Adjustment for Labour or Input Costs
21 December 2010	n/a	Approval of STD Price Adjustments
24 November 2011	740	Consequential Changes to Commerce Commission Standard Terms Determinations
27 March 2012	n/a	Approval of STD Price Adjustments [2012]
17 May 2012	2012 NZCC 12	Clarification of the UBA and UBA Backhaul Standard Terms Determinations 2012

Table of contents

1	Introduction.....	1
2	Charges.....	1
3	UBA Backhaul Connection and Monthly Charges.....	1
4	Adjustment to Charges	44
	Tables of UBA Backhaul Charges	55
1	UBA Backhaul Service Transaction Charges.....	55
2	UBA Backhaul Service Recurring Charges	77
3	UBA Backhaul Ancillary Services.....	1010
	Appendix A - UBA Backhaul Service Recurring Charges	1313
	Table of Distance Groupings	1313
	Appendix B – Application of UBA Backhaul connection Charges and monthly rental Charges.....	1414

1 Introduction

- 1.1 This schedule sets out the Charges¹ for the UBA Backhaul Service ~~at the date the UBA Backhaul Terms take effect~~ and provides a mechanism to make any adjustments to the Charges ~~for Service Components²~~.
- 1.2 References to clauses or sections are references to clauses or sections in this UBA Backhaul Price List unless expressly provided otherwise. The definitions set out in the UBA Backhaul General Terms and the UBA Backhaul Operations Manual apply to the extent that they are not expressly modified by or inconsistent with the context of this UBA Backhaul Price List.

Comment [A3]: 11.3: Standardisation

Comment [A4]: 11.1: No longer applicable

Comment [A5]: 11.3: Standardisation

2 Charges

- 2.1 ~~All Prices³ are listed under the "Charge" column for each Service Component.~~
- ~~2.2.2 Each~~ Charges for UBA Backhaul Service Components are described in the table below as being either a Core Charge ('C') or a Sundry Charge ('S') Charge.
- 2.3 Core Charges are for the core components of the UBA Backhaul Service.
- 2.4 Sundry Charges are for other components of the UBA Backhaul Service.
- 2.5 Prices for Service Components are either:
- 2.5.1 fixed; or
 - 2.5.2 calculated; or
 - 2.5.3 expressed as "Price on application" (POA). Price that are POA must reflect the underlying cost of providing the resources and project management skills required to provide the Service Component.
- 2.6 For all Service Components that are POA, Chorus must, if requested by the Access Seeker, use all reasonable endeavours to provide the Access Seeker with two or more competitive quotes.
- 2.7 Charges will become due and payable and will be invoiced in the manner described in the "Charge Invoiced" column for each Service Component.
- 2.8 The provisions in the UBA Backhaul General Terms relating to invoicing and payment of Charges apply.
- 2.9 All adjustments to Prices must be done in accordance with the relevant Price Change Mechanism listed in the "Price Change Mechanism" column for each Service Component.
- 2.10 Any adjustments to Charges for Service Components must be approved by the Commission.

Comment [A6]: 11.3: Standardisation

3 UBA Backhaul Connection and Monthly Charges

- ~~2.23.1~~ The following clauses provide a detailed explanation about connection Charges (Service Components 1.1 and 1.2) and monthly Charges (Service Components 2.1 to 2.24):
- ~~2.23.2~~ For the purposes of this UBA Backhaul Price List:
- ~~2.3.13.2.1~~ A primary link means that part of the UBA Backhaul Service between the FDS Handover Point and the Parent POI Site (**Primary Link**). A secondary link means that part of the UBA Backhaul Service between the Parent POI Site and the ASNAPOI Handover Point (**Secondary Link**). A **Link** means a Primary Link and/or a Secondary Link; and

Comment [A7]: 11.3: Standardisation. Moved up from below.

Comment [A8]: 11.3: Standardisation

¹ **Charge** is defined in the UBA Backhaul General Terms as "all or (as the context requires) any amounts payable by the Access Seeker under the UBA Backhaul Terms." Charges in this schedule exclude GST.

² **Service Component** means a component of the UBA Backhaul Service, listed in the "Service Component" column of the tables 1-3 below. Each Service Component has a description of the service, a Price Change Mechanism, invoicing detail and a Charge, which is identified as either Core or Sundry. Individual Service Components are referred to by the numerical reference number at the start of the row in which the Service Component is described.

³ **Price** in this document means the dollar amount(s) attributed to a Service Component. A Price becomes a Charge when the Access Seeker requests/receives the Service. Prices in this schedule exclude GST.

~~2.3.23.2.2~~ **FDS End** means the end located at the FDS. **ASNAPOI End** means the end located at the ASNAPOI. **One End** refers to either the FDS End or the ASNAPOI End, as the context requires. **Two Ends** refers to the FDS End and the ASNAPOI End.

~~2.43.3~~ The connection Charge for the UBA Backhaul Service (Service Components 1.1 and 1.2) varies depending on whether the Access Seeker requires connection at One End or Two Ends. The application of these Charges is not dependent on the distance groups in Appendix A or the applicable transmission capacities for the UBA Backhaul Service. Service Component 1.1 applies where the Access Seeker requires a new UBA Backhaul connection for Two Ends. In contrast, Service Component 1.2 applies where the Access Seeker requires a new UBA Backhaul connection for One End.

~~2.53.4~~ For the avoidance of doubt:

~~2.5.43.4.1~~ a Parent POI Site does not qualify as an End unless that Parent POI Site is an ASNAPOI;

~~2.5.23.4.2~~ A single connection Charge for the ASNAPOI End is payable by the Access Seeker regardless of how many Links the Access Seeker has ending at that ASNAPOI; and

~~2.5.33.4.3~~ the Access Seeker may purchase more than one Secondary Link between the same POI Site and the same ASNAPOI – see example 3 in Appendix B.

~~2.63.5~~ The monthly Charges for the Primary Link and the Secondary Link (Service Components 2.1 to 2.24) vary depending on the radial distance of the Link and the transmission capacity. There are six distance groups for each transmission capacity for the UBA Backhaul Service. The distance groups are set out in Appendix A and the radial distances are set out in Schedule 5 of the UBA Backhaul General Terms. A list of the radial distances must also be made available to the Access Seekers via a secure Chorus web portal and must be regularly updated by Chorus.

~~2.73.6~~ The application of the monthly Charges for the Primary Link and the Secondary Link (Service Components 2.1 to 2.24) is illustrated in the following clauses.

~~2.83.7~~ Where the Access Seeker has

~~2.8.43.7.1~~ a Primary Link that ends at the Parent POI Site;

~~2.8.23.7.2~~ a Secondary Link that starts at the same Parent POI Site; and

~~2.8.33.7.3~~ each Link has the same transmission capacity,

the Access Seeker pays a monthly Charge at that applicable capacity. The applicable radial distance is the sum of the radial distance from the FDS to the Parent POI Site and the radial distance from the Parent POI Site to the ASNAPOI.

~~2.93.8~~ Where the Access Seeker has:

~~2.9.43.8.1~~ a Primary Link that ends at the Parent POI Site;

~~2.9.23.8.2~~ a Secondary Link that starts at the same Parent POI Site; and

~~2.9.33.8.3~~ the Secondary Link has a different transmission capacity to the Primary Link,

the Access Seeker pays the applicable monthly Charge for each Link at the applicable capacity. The radial distance for the Primary Link is the radial distance from the FDS to the Parent POI Site and the radial distance for the Secondary Link is the radial distance from the Parent POI Site to the ASNAPOI.

~~2.10~~ Appendix B sets out examples relating to the application of the connection Charges (Service Components 1.1 and 1.2) and monthly Charges (Service Components 2.1 to 2.24).

~~3.9~~

In addition to the above requirements, UBA Backhaul Service Components 2.21 to 2.24 must be ~~charged-calculated~~ in accordance with the following formula: $\text{Price} = \exp\{4.6300 + (0.5071 \times \ln(\text{radial distance})) + (0.3858 \times \ln(\text{transmission capacity}))\}$ where "ln" means the natural log.⁴

Comment [A9]: 11.3: Standardisation

~~Sundry Charges are for other components of the UBA Backhaul Service (ancillary services). These changes are either:~~

~~fixed; or~~

~~calculated on a fixed hourly rate; or~~

~~expressed as "price on application" (POA). POA charges must reflect the underlying cost of providing the resources and project management skills required to provide the service.~~

⁴ This formula can be calculated in Excel, using the exp() function with the ln(x) values of distance and transmission capacity.

All Charges expressed as "price on application" (POA) must reflect the underlying cost of providing the resources and project management skills required to provide the service. For all POA price items, Chorus must, if requested by the Access Seeker, use all reasonable endeavours to provide the Access Seeker with two or more competitive quotes.

The Access Seeker must notify Chorus of the service components that it requires. Charges for the Service Components will become due and payable and will be invoiced in the manner described in the tables of UBA Backhaul Charges below.

The provisions in the UBA Backhaul General Terms relating to invoicing and payment of Charges apply.

All prices in this schedule exclude GST and are listed under the "Charge" column of the tables of UBA Backhaul Charges for each Service Component.

The relevant Price Change Mechanism for adjusting Prices for each Service Component is listed in the "Price Change Mechanism" column of the tables of UBA Backhaul Charges.

3.10 All adjustments to Charges must be approval by the Commission.

2.11

Comment [A10]: 11.3:
Standardisation. Moved up.

Comment [A11]: 11.3:
Standardisation. Moved up.

34 Adjustment to Sundry Charges Mechanism for Labour and Input Costs

3.14.1 Chorus must, subject to the approval of the Commission, pass through changes in costs by increasing or decreasing Sundry Charge Prices as follows:

Comment [A12]: 11.3: Standardisation

3.1.4.1.1 Each year, on 1 November (Review Date), Chorus must calculate adjustments to the Sundry Charge Prices relating to the Service Components where this clause is prescribed Price Change Mechanism that are shown in the Price List table below. Those adjustments must be (in the column "Price Change Mechanism" and identified as "clause 3.1.1") by an amount equivalent to the percentage change (up or down) for the previous year in the Labour Cost Index (All sectors, Salary and Ordinary Time Wage Rates, All industries combined) Series Reference LCIQ.SG5179 (Communication Services) Series Reference LCIQ.SE4919 as published by Statistics New Zealand, or such successor index as may be designated by Statistics New Zealand from time-to-time.

Comment [A13]: 11.3: Standardisation

Comment [A14]: 11.1: No longer applicable

Comment [A15]: 11.3: Standardisation

Comment [A16]: 12.1 FPP index

3.1.2 For the purpose of this clause the previous year is the period which commences on the quarterly index date immediately prior to the previous Review Date and ends on the quarterly index date immediately prior to the Review Date. For the purpose of this clause 4.1.1 the annual percentage change between the previous year's June index number and the current year's June index number must be used.

Comment [A17]: 12.2.3: Clarifying calculation

3.1.3.4.1.2 Where:

3.1.3.4.1.2.1 the cost of providing one of the Service Components (with the prescribed Price Change Mechanism "clause 4.1.2") with a Charge that is shown in the Price List table below (in the column "Price Change Mechanism" and identified as "clause 3.1.2.1") increases or decreases; and

Comment [A18]: 11.3: Standardisation

3.1.3.4.1.2.2 that increase or decrease is due to changes in input costs charged to Chorus pursuant to contractual obligations by its field service company contractors,

Chorus must immediately calculate the adjustment to the Sundry Charge Price relating to that Service Component to reflect the increase or decrease in costs.

Comment [A19]: 11.3: Standardisation

3.1.4.1.3 When adjusting a Price charge under clause 34.1, Chorus must also review all Service Components Charges which are POA and provide calculate a fixed Price where this is practicable.

Comment [A20]: 11.3: Standardisation

3.2.4.2 Once an adjustment or new fixed Price has been calculated under clause 34.1, Chorus must give notice to the Commission of the adjustment. The notice must include:

4.2.1 the figures used in the calculation for the adjustment;

4.2.2 the calculations undertaken for the adjustment;

Comment [A21]: 11.3: Standardisation & 12.2: Standardising adjustment process

3.2.4.2.3 a description of the adjustment made; and

3.2.4.2.4 the reasons for the increase or decrease.

4.3 After any adjustment has been approved by the Commission, Chorus must to a Sundry Charge shall take effect from the date the Commission approves the adjustment.

4.3.1 notify Access Seekers of the adjustment; and then,

3.2.3.4.2 activate the new Charge arising from the Adjustments in its billing system within 30 Working Days of the Commission notifying Chorus of its approval.

Comment [A22]: 11.3: Standardisation & 12.2: Standardising adjustment process

Tables of UBA Backhaul Charges

1 UBA Backhaul Service Transaction Charges

Service Component	Description	Core or Sundry	Charge invoiced	Price Change Mechanism	Charge (excl. GST)
1.1 UBA Backhaul Service New Connection – Two Ends	The establishment of a UBA Backhaul Service new connection at Two Ends. Connection only	C	Following notification by Chorus of completion of Order	None	\$8,059
1.2 UBA Backhaul Service New Connection – One End	The establishment of a UBA Backhaul Service new connection at One End. Connection only	C	Following notification by Chorus of completion of Order	None	\$4,030
1.3 Access Seeker Handover Connection Installation – GigE Capacity	Standard installation of a Handover Connection – GigE capacity	S	On completion of installation	Clause 3.1.1 and Clause 3.1.2	\$543,26560.13* Based on a field service company cost of [-----] CHORUS COI plus [-----] CHORUS COI administration charge and [-----] CHORUS COI to cover the estimated direct front office costs to manage each transaction. [-----] CHORUS COI mark up to cover common cos
1.4 Handover Fibre Installation	Charge for Chorus installing the Access Seeker's Handover Fibre (which is interconnected with the Handover Connection) between the exchange manhole and the OFDF. (See full requirements in UBA Backhaul Operations Manual)	S	Following notification by Chorus of completion of Order	Clause 3.1.1 No ne	Price on Application (POA) Based on cost of time and materials (including a 10% contribution towards common costs unless already recovered)
1.5 Relinquishment of Access Seeker Handover Connection or Handover Fibre	Relinquishment of an existing Access Seeker Handover Connection or Handover Fibre. Charge Covers time and materials to remove existing Handover Connection or Handover Fibre and associated cables and equipment	S	On completion of relinquishment	Clause 3.1.1 and Clause 3.1.2 None	Price on Application (POA) Basis for determining the charge is based on recovery of costs incurred (including 10% contribution towards common costs unless already recovered)

Comment [A23]: 11.3: Standardisation (unless otherwise specified).

Comment [A25]: 9.3: 2016 adjustment

Comment [A24]: 11.1: No longer applicable

*Originally changed by Letter to Nick Clarke: UBA Backhaul STD – Annual Adjustment to Charges for Labour or Input Costs and POA Charges and Review of SLTs (8 July 2009). Changed again by Letter to Osmond Borthwick, Commerce Commission (9 October 2009). Changed again by Letter to Brendan Dempsey: UBA and UBA Backhaul STD Price Adjustments (21 December 2010).

Service Component	Description	Core or Sundry	Charge invoiced	Price Change Mechanism	Charge (excl. GST)
1.6 UBA Backhaul Service Network Change Order	Charge for Project management and coordination of Network Change Orders. Where necessary, the Access Seeker will also be responsible separately for any relevant new connection or relinquishment	S	On completion of Change Order	Clause 43.1.1	\$107.09 ⁶ 113.72 per hour Pricing reflects the fully allocated cost of project management
1.7 UBA Backhaul Service Speed Change Order	Changing the transmission capacity of an existing connection when only a reconfiguration is required	S	Following completion of work	Clause 3.1.1 and Clause 34.1.2	\$346.60 ⁷ 304.31 Based on one three hour's work at [] CHORUS COI per hour Based on a service company cost of [] CHORUS COI plus [] CHORUS COI administration charge and [] CHORUS COI to cover the estimated direct front office costs to manage each transaction. [] CHORUS COI mark up to cover common costs. ⁸
1.8 UBA Backhaul Service Connection Relinquishment	Where the Access Seeker terminates supply of a UBA Backhaul Service connection	C	Following notification by Chorus of completion of Order	<u>None</u>	<u>No charge</u> \$0.00

Comment [A23]: 11.3: Standardisation (unless otherwise specified).

Comment [A26]: 9.3: 2016 adjustment

Comment [A28]: 9.3: 2016 adjustment

Comment [A27]: 11.1: No longer applicable

⁶ Letter to Nick Clarke: UBA Backhaul STD – Annual Adjustment to Charges for Labour or Input Costs and POA Charges and Review of SLTs (8 July 2009). Changed again by price updates contained in Letter to Brendan Dempsey: UBA and UBA Backhaul STD Price Adjustments (21 December 2010).

⁷ Originally changed by Letter to Nick Clarke: UBA Backhaul STD – Annual Adjustment to Charges for Labour or Input Costs and POA Charges and Review of SLTs (8 July 2009). Changed again by Letter to Osmond Borthwick, Commerce Commission (9 October 2009). Changed again by price updates contained in Letter to Brendan Dempsey: UBA and UBA Backhaul STD Price Adjustments (21 December 2010).

⁸ Letter to Osmond Borthwick, Commerce Commission (9 October 2009).

2 UBA Backhaul Service Recurring Charges

Service Component	Description	Core or Sundry	Charge Invoiced	Price Change Mechanism	Charge (excl. GST)
2.1 UBA Backhaul Service - 50Mbps – Distance Group 1*	Monthly charge for UBA Backhaul Service - 50Mbps – Distance Group 1*	C	Monthly in advance from completion of Order	<u>None</u>	\$738
2.2 UBA Backhaul Service - 100Mbps – Distance Group 1*	Monthly charge for UBA Backhaul Service - 100Mbps – Distance Group 1*	C	Monthly in advance from completion of Order	<u>None</u>	\$964
2.3 UBA Backhaul Service - 200Mbps – Distance Group 1*	Monthly charge for UBA Backhaul Service - 200Mbps – Distance Group 1*	C	Monthly in advance from completion of Order	<u>None</u>	\$1,260
2.4 UBA Backhaul Service – 1Gbps – Distance Group 1*	Monthly charge for UBA Backhaul Service – 1Gbps – Distance Group 1*	C	Monthly in advance from completion of Order	<u>None</u>	\$2,344
2.5 UBA Backhaul Service - 50Mbps – Distance Group 2*	Monthly charge for UBA Backhaul Service - 50Mbps – Distance Group 2*	C	Monthly in advance from completion of Order	<u>None</u>	\$1,288
2.6 UBA Backhaul Service - 100Mbps – Distance Group 2*	Monthly charge for UBA Backhaul Service - 100Mbps – Distance Group 2*	C	Monthly in advance from completion of Order	<u>None</u>	\$1,683
2.7 UBA Backhaul Service - 200Mbps – Distance Group 2*	Monthly charge for UBA Backhaul Service - 200Mbps – Distance Group 2*	C	Monthly in advance from completion of Order	<u>None</u>	\$2,199
2.8 UBA Backhaul Service – 1Gbps – Distance Group 2*	Monthly charge for UBA Backhaul Service – 1Gbps – Distance Group 2*	C	Monthly in advance from completion of Order	<u>None</u>	\$4,091
2.9 UBA Backhaul Service - 50Mbps – Distance Group 3*	Monthly charge for UBA Backhaul Service - 50Mbps – Distance Group 3*	C	Monthly in advance from completion of Order	<u>None</u>	\$1,669
2.10 UBA Backhaul Service - 100Mbps – Distance Group 3*	Monthly charge for UBA Backhaul Service - 100Mbps – Distance Group 3*	C	Monthly in advance from completion of Order	<u>None</u>	\$2,181
2.11 UBA Backhaul Service - 200Mbps – Distance Group 3*	Monthly charge for UBA Backhaul Service - 200Mbps – Distance Group 3*	C	Monthly in advance from completion of Order	<u>None</u>	\$2,849

Comment [A29]: 11.3: Standardisation (unless otherwise specified).

Service Component	Description	Core or Sundry	Charge Invoiced	Price Change Mechanism	Charge (excl. GST)
2.12 UBA Backhaul Service – 1Gbps – Distance Group 3*	Monthly charge for UBA Backhaul Service – 1Gbps – Distance Group 3*	C	Monthly in advance from completion of Order	<u>None</u>	\$5,301
2.13 UBA Backhaul Service - 50Mbps – Distance Group 4*	Monthly charge for UBA Backhaul Service - 50Mbps – Distance Group 4*	C	Monthly in advance from completion of Order	<u>None</u>	\$1,979
2.14 UBA Backhaul Service - 100Mbps – Distance Group 4*	Monthly charge for UBA Backhaul Service - 100Mbps – Distance Group 4*	C	Monthly in advance from completion of Order	<u>None</u>	\$2,586
2.15 UBA Backhaul Service - 200Mbps – Distance Group 4*	Monthly charge for UBA Backhaul Service - 200Mbps – Distance Group 4*	C	Monthly in advance from completion of Order	<u>None</u>	\$3,379
2.16 UBA Backhaul Service – 1Gbps – Distance Group 4*	Monthly charge for UBA Backhaul Service – 1Gbps – Distance Group 4*	C	Monthly in advance from completion of Order	<u>None</u>	\$6,287
2.17 UBA Backhaul Service - 50Mbps – Distance Group 5*	Monthly charge for UBA Backhaul Service - 50Mbps – Distance Group 5*	C	Monthly in advance from completion of Order	<u>None</u>	\$2,249
2.18 UBA Backhaul Service - 100Mbps – Distance Group 5*	Monthly charge for UBA Backhaul Service - 100Mbps – Distance Group 5*	C	Monthly in advance from completion of Order	<u>None</u>	\$2,938
2.19 UBA Backhaul Service - 200Mbps – Distance Group 5*	Monthly charge for UBA Backhaul Service - 200Mbps – Distance Group 5*	C	Monthly in advance from completion of Order	<u>None</u>	\$3,838
2.20 UBA Backhaul Service – 1Gbps – Distance Group 5*	Monthly charge for UBA Backhaul Service – 1Gbps – Distance Group 5*	C	Monthly in advance from completion of Order	<u>None</u>	\$7,142
2.21 UBA Backhaul Service - 50Mbps – Distance Group 6*	Monthly charge for UBA Backhaul Service - 50Mbps – Distance Group 6*	C	Monthly in advance from completion of Order	<u>None</u>	Exponential of [4.6300 + (0.5071 x ln(radial distance)) + (0.3858 x ln(50))]
2.22 UBA Backhaul Service - 100Mbps – Distance Group 6*	Monthly charge for UBA Backhaul Service - 100Mbps – Distance Group 6*	C	Monthly in advance from completion of Order	<u>None</u>	Exponential of [4.6300 + (0.5071 x ln(radial distance)) + (0.3858 x ln(100))]
2.23 UBA Backhaul Service - 200Mbps – Distance Group 6*	Monthly charge for UBA Backhaul Service - 200Mbps – Distance Group 6*	C	Monthly in advance from completion of Order	<u>None</u>	Exponential of [4.6300 + (0.5071 x ln(radial distance)) + (0.3858 x ln(200))]

Comment [A29]: 11.3: Standardisation (unless otherwise specified).

Service Component	Description	Core or Sundry	Charge Invoiced	Price Change Mechanism	Charge (excl. GST)
2.24 UBA Backhaul Service – 1Gbps – Distance Group 6*	Monthly charge for UBA Backhaul Service – 1Gbps – Distance Group 6*	C	Monthly in advance from completion of Order	None	Exponential of [4.6300 + (0.5071 x ln(radial distance)) + (0.3858 x ln(1000))]
2.25 Access Seeker Handover Connection Monthly Rental Charge – GigE capacity	Standard Monthly rental for an Access Seeker Handover Connection– GigE capacity	S	Monthly in advance from completion of Order	Clause 3.1.1 and Clause 34.1.2	\$77,2388.53 Based on an underlying service costs including maintenance of [] CHORUS COI plus a mark up of [] CHORUS COI to cover common costs
2.26 Handover Fibre Space Rental Charge	Monthly space rental charge for Handover Fibre co-located on Chorus property	C	Monthly in advance from completion of Order	None	\$27.09

Comment [A29]: 11.3: Standardisation (unless otherwise specified).

Comment [A31]: 9.3: 2016 adjustment

Comment [A30]: 11.1: No longer applicable

* The Distance Groups are defined in Appendix A – UBA Backhaul Recurring Charges.

3 UBA Backhaul Ancillary Services

Service Component	Description	Core or Sundry	Charge invoiced	Price Change Mechanism	Charge (excl. GST)
3.1 No Fault Found	Fixed charge for fault call that is closed no Chorus fault found	S	Following completion of fault investigation	Clause 3.1.1 and Clause 3.1.2	\$110.22⁹ 124.13 Based on a service company cost of [] CHORUS COI plus [] CHORUS COI administration charge and [] CHORUS COI to cover the estimated direct front office costs to manage each transaction. [] CHORUS COI mark up to cover common costs
3.2 Additional OO&T Training	Charge for Access Seeker staff training (at Access Seeker's site) on the operation and use of OO&T. Maximum of ten persons per course	S	Following completion of training	Clause 34.1.1	\$107.09¹⁰ 113.72 per hour plus actual travel costs (as applicable, the costs of airplane flights, public transport fares, taxi fares and standard mileage rates for motor vehicles as published by Inland Revenue) to Access Seeker's site. Hourly rate reflects fully loaded cost of skilled employee to run training
3.3 Additional OFM Training	Charge for Access Seeker staff training (at Access Seeker's site) on the operation and use of OFM. Maximum of ten persons per course	S	Following completion of training	Clause 34.1.1	\$107.09¹¹ 113.72 per hour plus actual travel costs (as applicable, the costs of airplane flights, public transport fares, taxi fares and standard mileage rates for motor vehicles as published by Inland Revenue) to Access Seeker's site. Hourly rate reflects fully loaded cost of skilled employee to run training

Comment [A32]: 11.3: Standardisation (unless otherwise specified).

Comment [A34]: 9.3: 2016 adjustment

Comment [A33]: 11.1: No longer applicable

Comment [A35]: 9.3: 2016 adjustment

Comment [A36]: 9.3: 2016 adjustment

⁹ Originally changed by Letter to Nick Clarke: *UBA Backhaul STD – Annual Adjustment to Charges for Labour or Input Costs and POA Charges and Review of SLTs* (8 July 2009). Changed again by Letter to Osmond Borthwick, Commerce Commission (9 October 2009). Changed again by price updates contained in Letter to Brendan Dempsey: *UBA and UBA Backhaul STD Price Adjustments* (21 December 2010).

¹⁰ Letter to Nick Clarke: *UBA Backhaul STD – Annual Adjustment to Charges for Labour or Input Costs and POA Charges and Review of SLTs* (8 July 2009). Changed again by price updates contained in Letter to Brendan Dempsey: *UBA and UBA Backhaul STD Price Adjustments* (21 December 2010).

¹¹ Letter to Nick Clarke: *UBA Backhaul STD – Annual Adjustment to Charges for Labour or Input Costs and POA Charges and Review of SLTs* (8 July 2009). Changed again by price updates contained in Letter to Brendan Dempsey: *UBA and UBA Backhaul STD Price Adjustments* (21 December 2010).

Service Component	Description	Core or Sundry	Charge invoiced	Price Change Mechanism	Charge (excl. GST)
3.4 OO&T Licence Fee	Monthly software licence fee for OO&T	S	Monthly in advance	None	\$24.00 per Access Seeker per month Price is equal to the current charge for these services as outlined in the Access Seeker's Standard Commercial Agreement with Chorus
3.5 OFM Licence Fee	Monthly software licence fee for OFM	S	Monthly in advance	None	\$24.00 per Access Seeker per month Price is equal to the current charge for these services as outlined in the the Access Seeker's Standard Commercial Agreement with Chorus
3.6 Additional Copies of invoice	Additional hardcopies of invoices as requested by Access Seeker	S	Following provision of additional copies of invoice	Clause 34 .1.1	\$107.09 ¹² 113.72 per invoice Based on per line itemisation and average forecast invoice length plus estimated time and materials of person to prepare and courier cost charge
3.7 Additional Billing information	Providing any additional billing information requested by the Access Seeker	S	On provision of the additional billing information	Clause 34.1 None	Price on Application (POA) Based on time and material of analyst to prepare and deliver information
3.8 Cancellation Charge (Pre Truck Roll)	Cancellation of an Order after RFS date notified to Access Seeker but before truck roll confirmed	S	Upon cancellation	Clause 34 .1.1	\$4.71 ¹³ 5.00 Pricing reflects a \$4.00 administration cost and time plus a 10% mark-up to cover common costs

Comment [A32]: 11.3: Standardisation (unless otherwise specified).

Comment [A37]: 9.3: 2016 adjustment

Comment [A38]: 9.3: 2016 adjustment

¹² Letter to Nick Clarke: UBA Backhaul STD—Annual Adjustment to Charges for Labour or Input Costs and POA Charges and Review of SLTs (8 July 2009).

¹³ Letter to Nick Clarke: UBA Backhaul STD—Annual Adjustment to Charges for Labour or Input Costs and POA Charges and Review of SLTs (8 July 2009). Changed again by price updates in Letter to Brendan Dempsey: UBA and UBA Backhaul STD Price Adjustments (21 December 2010).

Service Component	Description	Core or Sundry	Charge invoiced	Price Change Mechanism	Charge (excl. GST)
3.9 Cancellation Charge (Post Truck Roll)	Cancellation of an Order after RFS date notified to Access Seeker and after truck roll confirmed	S	Upon cancellation	Clause 3.1.1 and Clause 3.1.2	\$6.76 ⁴⁴ 104.13 Based on a service company cost of [] CHORUS COI plus [] CHORUS COI administration charge and [] CHORUS COI to cover the estimated direct front office costs to manage each transaction. [] CHORUS COI mark up to cover common costs
3.10 Handover Fibre Maintenance Charge	Maintenance and fault repair of the Handover Fibre	S	Following completion of work	None	No charge \$0.00
3.11 Fixing fault where Access Seeker has no right of access	Charge for Fixing of fault by Chorus, at Access Seeker's request, where Access Seeker is responsible for the fault, but has no right of access.	S	On completion of fault rectification	Clause 3.1.1 None	Price on Application (POA) Based on cost of time and materials (including a 10% contribution towards common costs, unless already recovered)

Comment [A32]: 11.3: Standardisation (unless otherwise specified).

Comment [A40]: 9.3: 2016 adjustment

Comment [A39]: 11.1: No longer applicable

⁴⁴ Originally changed by Letter to Nick Clarke: *UBA Backhaul STD – Annual Adjustment to Charges for Labour or Input Costs and POA Charges and Review of SLTs* (8 July 2009). Changed again by Letter to Osmond Borthwick, Commerce Commission (9 October 2009). Changed again by price updates in Letter to Brendan Dompsey: *UBA and UBA Backhaul STD Price Adjustments* (21 December 2010).

Appendix A - UBA Backhaul Service Recurring Charges

Table of Distance Groupings

Distance Group	Radial Distance
1	0 km < radial distance ≤ 5 km
2	5 km < radial distance ≤ 10 km
3	10 km < radial distance ≤ 15 km
4	15 km < radial distance ≤ 20 km
5	20 km < radial distance ≤ 25 km
6	radial distance > 25 km

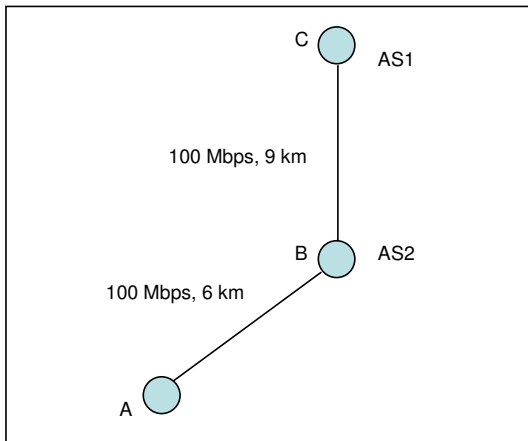
Appendix B – Application of UBA Backhaul connection Charges and monthly rental Charges

Comment [A41]: 11.3: Standardisation (unless otherwise specified).

This Appendix sets out a number of examples explaining how the connection Charges (Service Components 1.1 and 1.2) and monthly Charges (Service Components 2.1 to 2.24) will be applied under this STD.

Example 1:

In this example, the Access Seeker requires the same capacity on both the Primary and the Secondary Link of the UBA Backhaul Service.



Note: The radial distances from A – B and B – C must be calculated separately and added together to determine the applicable distance group for the Links from A – C.

Access Seeker 1

Access Seeker 1 (AS1) receives a EUBA Service at FDS A with Chorus as the Access Provider. The Parent POI Site is at B and C is an ASNAPOI for AS1. In this example, the applicable monthly rental ~~ratesCharge~~ and connection Charges are as follows:

Monthly Rental Rate-Charge A-C (100 Mbps, 15 km):	Service Component 2.10: UBA Backhaul Service – 100 Mbps – Distance Group 3
Total Connection Charge (A, C):	Service Component 1.1: UBA Backhaul Service New Connection – Two ends

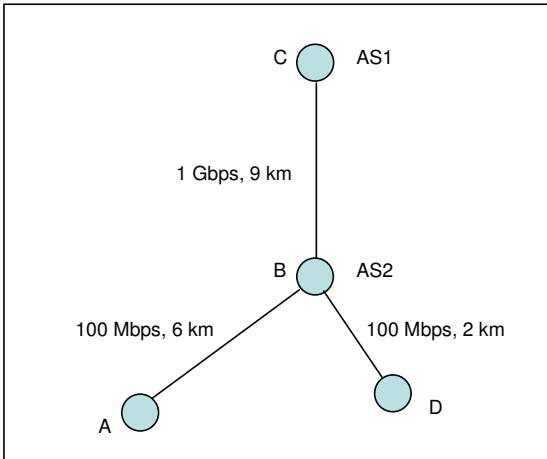
Access Seeker 2

Access Seeker 2 (AS2) receives a EUBA Service at FDS A with Chorus as the Access Provider. The Parent POI Site is at B and B is an ASNAPOI for AS2. In this example, the applicable monthly rental ~~rates-Charges~~ and connection Charges are as follows:

Monthly Rental Rate-Charge A-B (100 Mbps, 6 km):	Service Component 2.6: UBA Backhaul Service – 100 Mbps – Distance Group 2
Total Connection Charge (A, B):	Service Component 1.1: UBA Backhaul Service New Connection – Two ends

Example 2:

In this example, the Access Seeker requires different capacity on the Primary Link and the Secondary Link of the UBA Backhaul Service.



Note: The radial distances from A – B, B – C and D – B must be calculated separately to determine the applicable distance group for each Link.

Access Seeker 1

Access Seeker 1 (AS1) receives a EUBA Service at FDSs A and D with Chorus as the Access Provider. The Parent POI Site is at B and C is an ASNAPOI for AS1. In this example, the applicable monthly rental [rates-Charges](#) and connection Charges are as follows:

- | | |
|--|---|
| Monthly rental Rate-Charge A-B (100 Mbps, 6 km): | Service Component 2.6: UBA Backhaul Service – 100 Mbps – Distance Group 2 |
| Monthly rental Rate-Charge D-B (100 Mbps, 2 km): | Service Component 2.2: UBA Backhaul Service – 100 Mbps – Distance Group 1 |
| Monthly rental Rate-Charge B-C (1 Gbps, 9 km): | Service Component 2.8: UBA Backhaul Service – 1 Gbps – Distance Group 2 |
| Connection Charge (A, C): | Service Component 1.1: UBA Backhaul Service New Connection – Two Ends |
| Connection Charge (D): | Service Component 1.2: UBA Backhaul Service New Connection – One End |

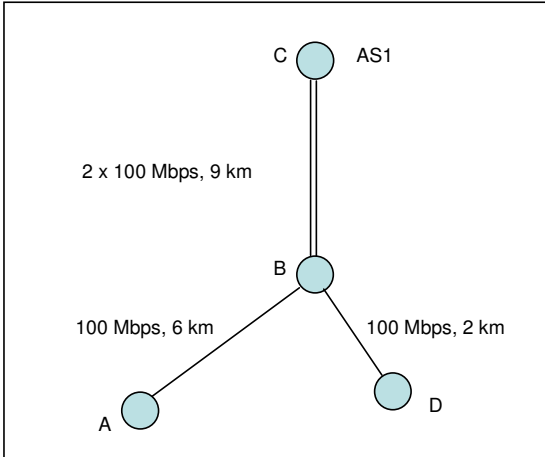
Access Seeker 2

Access Seeker 2 (AS2) receives a EUBA Service at FDSs A and D with Chorus as the Access Provider. The Parent POI Site is at B and B is an ASNAPOI for AS2. In this example, the applicable monthly rental [rates-Charges](#) and connection Charges are as follows:

- | | |
|--|---|
| Monthly Rental Rate-Charge A-B (100 Mbps, 6 km): | Service Component 2.6: UBA Backhaul Service – 100 Mbps – Distance Group 2 |
| Monthly Rental Rate-Charge D-B (100 Mbps, 2 km): | Service Component 2.2: UBA Backhaul Service – 100 Mbps – Distance Group 1 |
| Connection Charge (A, B): | Service Component 1.1: UBA Backhaul Service New Connection – Two Ends |
| Connection Charge (D): | Service Component 1.2: UBA Backhaul Service New Connection – One End |

Example 3:

In this example, the Access Seeker requires the same capacity on the Primary Links and the Secondary Links of the UBA Backhaul Service.



Note: The radial distances from A – B and B – C must be calculated separately and added together to determine the distance for the Links from A – C. Similarly, the radial distances from D – B and B – C must be calculated separately and added together to determine the applicable distance group for the Links from D – C.

Access Seeker 1

Access Seeker 1 (AS1) receives a EUBA Service at FDSs A and D from Chorus as the Access Provider. The Parent POI Site is at B and C is an ASNAPOI for AS1. In this example, AS1 purchases two Secondary Links to ensure that it has sufficient capacity to carry traffic on the Primary Links. The Links from A – C comprises a Primary Link from A – B and a Secondary Link from B – C. The Links from D – C comprises a Primary Link from D – B and a Secondary Link from B – C. Where AS1 purchases Links from A-C and from D-C, the applicable monthly rental ~~rates~~Charges- and connection Charges are as follows:

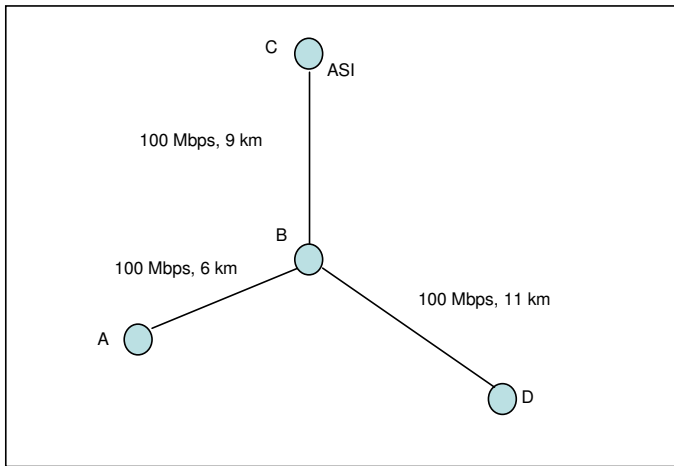
Monthly rental ~~Rate-Charge~~ A-C (100 Mbps, 15 km):
 Monthly rental ~~Rate-Charge~~ D-C (100 Mbps, 11 km):
 Connection Charge (A, C):
 Connection Charge (D):

Service Component 2.10: UBA Backhaul Service – 100 Mbps – Distance Group 3
 Service Component 2.10: UBA Backhaul Service – 100 Mbps – Distance Group 3
 Service Component 1.1: UBA Backhaul Service New Connection – Two Ends
 Service Component 1.2: UBA Backhaul Service New Connection – One End¹⁵

¹⁵ Decision No 654 (19 September 2008).

Example 4:¹⁶

In this example, the Access Seeker requires the same capacity on both the Primary and the Secondary Link of the UBA Backhaul Service. The Access Seeker *initially* purchases a Primary Link A-B together with a Secondary Link from B-C, and *subsequently* purchases a Primary Link D-B.



Note: the radial distances from A – B and B – C must be calculated separately and added together (as these are the links that were first purchased) to determine the applicable distance group for the Links from A – C. The radial distance from D-B is then used to determine the applicable distance group for the Link from D – B.

Access Seeker 1

Access Seeker 1 (AS1) initially receives a EUBA Service at FDS A with Chorus as the Access Provider. The Parent POI Site is at B and C is an ASNAPOI for AS1. The Access Seeker subsequently receives a EUBA Service at a second FDS, located at D. In this example, the applicable monthly rental **rates-Charges** and connection Charges are calculated as follows:

Monthly rental Rate-Charge A-C (100 Mbps, 15 km):	Service Component 2.10: UBA Backhaul Service – 100 Mbps – Distance Group 3
Monthly rental Rate-Charge D-B (100 Mbps, 11 km):	Service Component 2.10: UBA Backhaul Service – 100 Mbps – Distance Group 3
Connection Charge (A, C):	Service Component 1.1: UBA Backhaul Service New Connection – Two Ends
Connection Charge (D):	Service Component 1.2: UBA Backhaul Service New Connection – One End

Contemporaneous Purchase

If the Access Seeker purchased the above two Primary Links A-B and D-B and the Secondary Link B-C contemporaneously¹⁷, submitted under clause 9.2 of the UBA Backhaul Operations Manual, (and where all Links are of the same bandwidth), the monthly rental **Rate-Charge** shall be calculated so as to minimise the monthly cost to the Access Seeker. The calculation and selection of the Primary Link and Secondary Link combination that minimises cost to the Access Seeker will be the responsibility of the Access Seeker. Chorus Wholesale will implement the link combination as specified on the order forms.

In the above example, the Primary Link D-B would be combined with the Secondary Link B-C, with the Primary Link A-B priced incrementally.

Monthly rental Rate D-C (100 Mbps, 20 km):	Service Component 2.14: UBA Backhaul Service – 100 Mbps – Distance Group 4
Monthly rental Rate A-B (100 Mbps, 6 km):	Service Component 2.6: UBA Backhaul Service – 100 Mbps – Distance Group 2
Connection Charge (D, C):	Service Component 1.1: UBA Backhaul Service New Connection – Two Ends
Connection Charge (A):	Service Component 1.2: UBA Backhaul Service New Connection – One End

¹⁶ Decision No 654 (19 September 2008).

¹⁷ The two links to be combined must be included on the same order form and the third link should be submitted on a separate order form in accordance with the UBA Backhaul Operations Manual. We note that updates to Orders may be made in accordance with clause 9.10 of the UBA Backhaul Operations Manual.