

Waipa Networks

drop-down to change

Explanatory documentation: [Link](#)

Summary database: [Link](#)

Performance Accessibility Tool: [Link](#)

drop-down to change

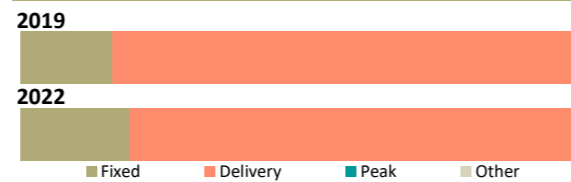
2022

Summary statistics

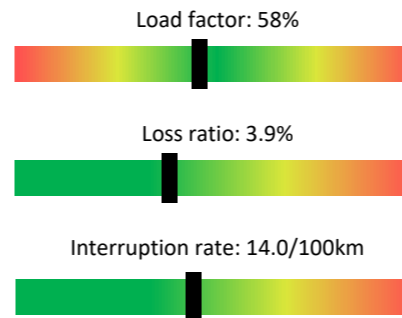
	2022 value	5 year trend	3 year CAGR	Rank
Regulatory asset base	\$145m		+5.4%	22
Regulatory profit	\$11.7m		+25.4%	22
Return on investment	9.22%		+22.9%	18
Line charge revenue	\$30.0m		+1.0%	22
Other income	\$0.0m		-100.0%	25
Customer connections	28,033		+1.7%	16
Energy delivered	420 GWh		+2.4%	18
Peak demand	86 MW		+5.1%	17
Network capacity	291 MVA		-2.2%	19
Capital expenditure	\$19.0m		+38.2%	14
Operating expenditure	\$11.0m		+8.3%	20
Capital contributions	\$3.2m		+4.7%	13
Related party transactions	\$11.4m		+5.0%	11
Line length	2,292km		+0.9%	22
Outages - SAIDI	340 minutes		+26.4%	10
Outages - SAIFI	2.37 faults		+20.0%	12

Line charge revenues

	Proportion of revenue	Charges per unit	Rank
Average daily charge	19.6%	57.3¢/ICP	22
Delivery (kWh)	80.3%	5.7¢/kWh	9
Peak based	0.2%	\$1/kW	23



Network ratios



Company details

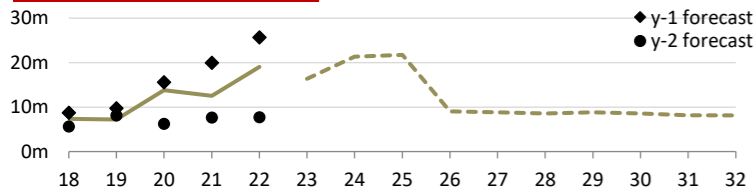
PQ Regulated?	No
CEO:	Sean Horgan
Ownership:	Waipa Networks Trust
Head Office:	240 Harrison Drive; Te Awamutu
Phone number:	07 872 0745
Website:	www.waipanetworks.co.nz

Lines and cables

Estimated state of the assets	Distribution & LV O/H lines	Distribution & LV U/G cables	Subtransmission lines and cables	Poles
Quantity	1,736km	491km	36km	22,505
RAB Value	\$30.4m	\$25.1m	\$20.0m	*
Average grade	3.18	4.07	4.97	4.08
Grade 1 / 2	0.4% / 3.6%	0.9% / 7.2%	0.0% / 0.0%	0.1% / 0.4%
Unknown grade	0.0%	0.0%	0.0%	0.0%
Average age	35 years	20 years	6 years	34 years
Over generic age	0km (0.0%)	25km (5.1%)	0km (0.0%)	809 (3.6%)
Unknown age	0.0%	0.0%	0.0%	0.0%
5yr replacement req (est)	2.1%	4.5%	0.0%	0.3%
5yr planned replacement	0.5%	0.5%	0.0%	4.7%
Forecast repex (ave)	\$0.0m -100%	\$0.0m -100%	\$0.0m	*
Repex series				*

* RAB and expenditure on poles is included within Distribution and LV lines

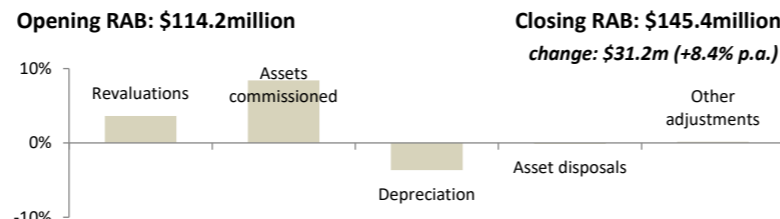
Capital expenditure



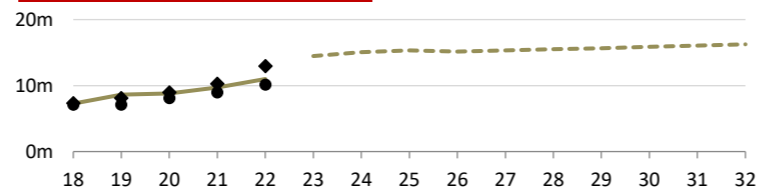
3 year ratios		
Total capex / asset base	Total capex / connections	Total capex / depreciation
11.0% Rank: 6	\$548 Rank: 15	3.41 Rank: 5

Capex by expenditure category	Average (2020–2022)	5 year trend	% of capex
Consumer connection	\$4.6m		30.3%
Non-network assets	\$4.0m		26.7%
Asset replacement & renewal	\$2.9m		18.9%
System growth	\$2.6m		16.9%
Reliability, safety & environment	\$1.0m		6.4%
Asset relocations	\$0.1m		0.8%
Total capital expenditure	\$15.1m		100.0%
Related party transactions	\$7.3m		48.2%

Annualised RAB changes (2020–2022)



Operating expenditure



3 year ratios		
Network opex / metre of line	Non-network opex / connections	Total opex / kW
\$1.80 Rank: 12	\$208 Rank: 19	\$122 Rank: 17

Opex by expenditure category	Average (2020–2022)	5 year trend	% of opex
Business support	\$3.0m		30.0%
System operations & network support	\$2.8m		28.3%
Service interruptions & emergencies	\$1.6m		15.8%
Routine & corrective maintenance	\$1.0m		10.4%
Vegetation management	\$0.9m		9.5%
Asset replacement & renewal	\$0.6m		6.0%
Total operating expenditure	\$9.8m		100.0%
Related party transactions	\$4.5m		46.0%

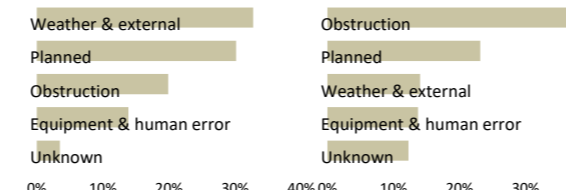
Switchgear and transformers

Estimated state of the assets	Distribution transformers	Distribution switchgear	Zone-substation transformers	Zone-substation switchgear
Quantity	3,672	5,634	0	0
RAB Value	\$32.7m	\$19.8m	<----- \$0.0m ----->	
Average grade	4.22	3.53	.	.
Grade 1 / 2	0.3% / 1.3%	25.6% / 4.8%	.	.
Unknown grade	0.0%	0.0%	.	.
Average age	23 years	25 years	.	.
Over generic age	478 (13.0%)	1,818 (32.3%)	.	.
Unknown age	0.0%	0.0%	.	.
5yr replacement req (est)	0.9%	27.9%	.	.
5yr planned replacement	3.5%	3.5%	.	.
Forecast repex (ave)	\$0.7m -21%	\$0.8m -2%		\$0.0m
Repex series				

Reliability

	Unplanned	Planned	Trend
Interruptions	188	132	↑
SAIDI	262.0	77.7	↑
SAIFI	2.11	0.26	↑
CAIDI	124.1	294.6	↑

SAIDI causes



SAIFI causes

