

Electricity Invercargill

drop-down to change

Explanatory documentation: [Link](#)

Summary database: [Link](#)

Performance Accessibility Tool: [Link](#)

drop-down to change

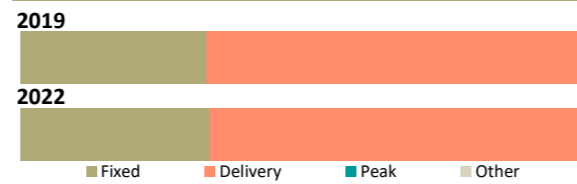
2022

Summary statistics

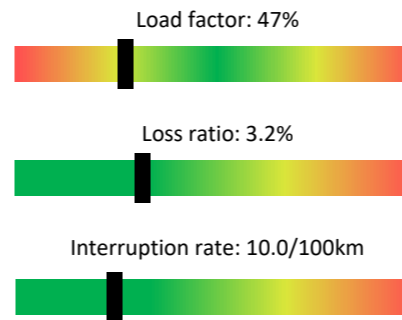
	2022 value	5 year trend	3 year CAGR	Rank
Regulatory asset base	\$100m		+2.0%	25
Regulatory profit	\$8.4m		+12.0%	24
Return on investment	9.55%		+12.0%	15
Line charge revenue	\$17.7m		-7.5%	25
Other income	\$0.1m		-7.3%	22
Customer connections	17,491		+0.1%	23
Energy delivered	252 GWh		-0.3%	23
Peak demand	62 MW		+0.4%	23
Network capacity	158 MVA		+1.7%	25
Capital expenditure	\$6.7m		+6.9%	25
Operating expenditure	\$5.1m		-1.3%	26
Capital contributions	\$0.9m		+68.8%	18
Related party transactions	\$9.6m		+1.8%	13
Line length	663km		+0.3%	27
Outages - SAIDI	105 minutes		+69.4%	25
Outages - SAIFI	1.15 faults		+52.0%	24

Line charge revenues

	Proportion of revenue	Charges per unit	Rank
Average daily charge	34.0%	94.1¢/ICP	12
Delivery (kWh)	66.0%	4.6¢/kWh	13
Peak based	0.0%	N/A	24



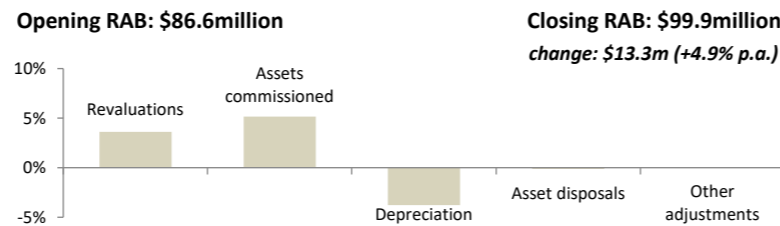
Network ratios



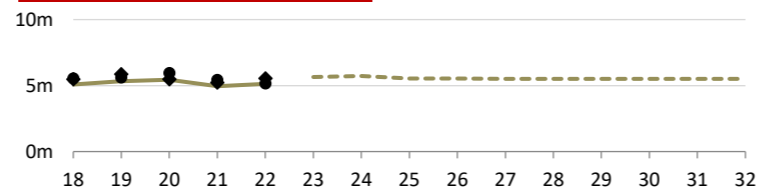
Company details

PQ Regulated?	Yes	Known Breaches	Price: No
			Quality: 2012
CEO:	Jason Franklin (Powernet)		
Ownership:	Invercargill City Council 100%		
Head Office:	251 Racecourse Road; Invercargill		
Phone number:	03 211 1899		
Website:	https://powernet.co.nz/about-us/networks-we-m		

Annualised RAB changes (2020–2022)



Operating expenditure

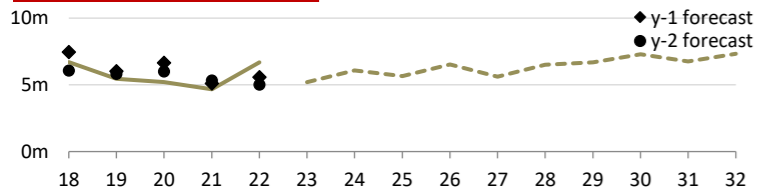


Lines and cables

Estimated state of the assets	Distribution & LV O/H lines	Distribution & LV U/G cables	Subtransmission lines and cables	Poles
Quantity	53km	583km	28km	952
RAB Value	\$2.6m	\$45.3m	\$8.4m	*
Average grade	2.74	3.21	3.37	3.87
Grade 1 / 2	13.8% / 18.9%	0.8% / 12.1%	0.0% / 0.0%	0.0% / 0.9%
Unknown grade	0.0%	0.0%	0.0%	0.0%
Average age	35 years	33 years	35 years	35 years
Over generic age	4km (7.2%)	3km (0.5%)	0km (0.0%)	220 (23.1%)
Unknown age	0.5%	0.8%	0.0%	0.7%
5yr replacement req (est)	23.2%	6.9%	0.0%	0.5%
5yr planned replacement	13.9%	0.7%	0.0%	2.8%
Forecast repex (ave)	\$0.3m +158%	\$0.7m +14%	\$0.0m	*
Repex series				

* RAB and expenditure on poles is included within Distribution and LV lines

Capital expenditure



3 year ratios		
Total capex / asset base	Total capex / connections	Total capex / depreciation
5.7% Rank: 24	\$316 Rank: 26	1.65 Rank: 23

Capex by expenditure category	Average (2020–2022)	5 year trend	% of capex
Asset replacement & renewal	\$4.0m		72.4%
Consumer connection	\$1.0m		17.7%
Asset relocations	\$0.4m		6.5%
Reliability, safety & environment	\$0.2m		3.5%
Non-network assets	\$0.0m		0.0%
System growth	\$0.0m		0.0%
Total capital expenditure	\$5.5m		100.0%
Related party transactions	\$5.1m		92.1%

3 year ratios		
Network opex / metre of line	Non-network opex / connections	Total opex / kW
\$2.84 Rank: 3	\$189 Rank: 21	\$84 Rank: 25

Opex by expenditure category	Average (2020–2022)	5 year trend	% of opex
Business support	\$2.2m		42.3%
Routine & corrective maintenance	\$1.2m		22.5%
System operations & network support	\$1.1m		21.3%
Service interruptions & emergencies	\$0.5m		10.1%
Asset replacement & renewal	\$0.2m		3.8%
Vegetation management	\$0.0m		0.1%
Total operating expenditure	\$5.2m		100.0%
Related party transactions	\$3.9m		75.9%

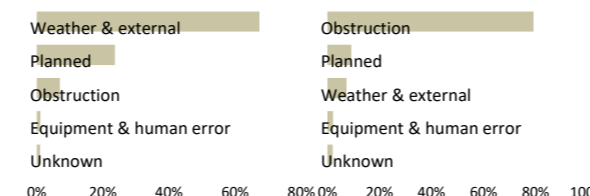
Switchgear and transformers

Estimated state of the assets	Distribution transformers	Distribution switchgear	Zone-substation transformers	Zone-substation switchgear
Quantity	428	578	7	72
RAB Value	\$11.0m	\$7.2m	<----- \$22.0m ----->	
Average grade	3.24	2.82	3.66	2.47
Grade 1 / 2	5.1% / 15.0%	17.3% / 32.8%	0.0% / 17.0%	13.0% / 10.7%
Unknown grade	0.0%	0.0%	0.0%	0.0%
Average age	25 years	22 years	32 years	20 years
Over generic age	59 (13.8%)	92 (16.0%)	3 (45.7%)	20 (27.4%)
Unknown age	0.0%	0.2%	0.0%	0.0%
5yr replacement req (est)	12.6%	33.7%	8.5%	18.3%
5yr planned replacement	5.2%	17.0%	0.0%	22.9%
Forecast repex (ave)	\$0.8m +51%	\$1.5m +142%	\$0.7m -68%	
Repex series				

Reliability

	Unplanned	Planned	Trend
Interruptions	37	29	↑
SAIDI	77.1	28.2	↑
SAIFI	1.05	0.11	↑
CAIDI	73.7	263.5	↑

SAIDI causes



SAIFI causes

