

# Wellington Electricity

drop-down to change

Explanatory documentation: [Link](#)

Summary database: [Link](#)

Performance Accessibility Tool: [Link](#)

drop-down to change

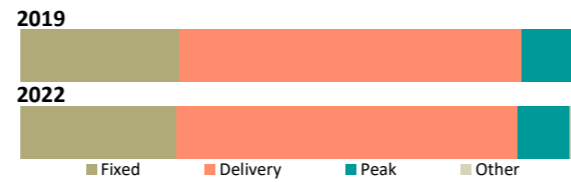
# 2022

## Summary statistics

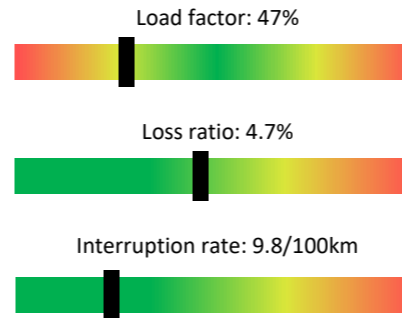
	2022 value	5 year trend	3 year CAGR	Rank
Regulatory asset base	\$744m		+2.8%	4
Regulatory profit	\$72.3m		+17.7%	4
Return on investment	11.17%		+16.9%	2
Line charge revenue	\$159.0m		-5.4%	4
Other income	\$0.7m		-19.6%	10
Customer connections	171,955		+0.8%	4
Energy delivered	2,267 GWh		-0.5%	4
Peak demand	579 MW		+2.0%	4
Network capacity	1,470 MVA		+1.0%	4
Capital expenditure	\$50.5m		-3.4%	8
Operating expenditure	\$35.4m		-1.2%	6
Capital contributions	\$14.5m		+28.3%	4
Related party transactions	\$15.7m		-0.2%	10
Line length	4,806km		+0.4%	10
Outages - SAIDI	40 minutes		+5.4%	29
Outages - SAIFI	0.47 faults		-1.9%	29

## Line charge revenues

	Proportion of revenue	Charges per unit	Rank
Average daily charge	28.0%	71.0¢/ICP	18
Delivery (kWh)	61.3%	4.3¢/kWh	18
Peak based	9.4%	\$26/kW	19



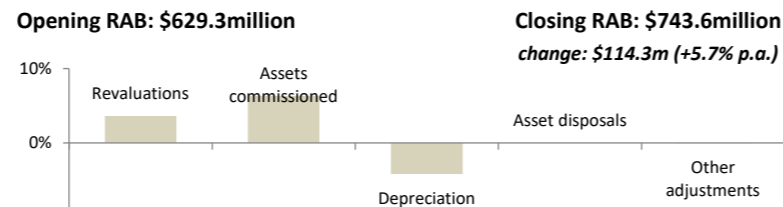
## Network ratios



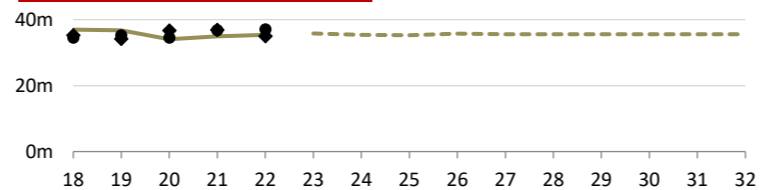
## Company details

PQ Regulated?	Yes	Known Breaches
		Price: 2012
		Quality: 2013-2014, 2018
CEO:	Greg Skelton	
Ownership:	Cheung Kong Infrastructure and Power Assets Holdings	
Head Office:	85 The Esplanade; Petone, Lower Hutt	
Phone number:	04 915 6100	
Website:	<a href="http://www.welectricity.co.nz">www.welectricity.co.nz</a>	

## Annualised RAB changes (2020–2022)



## Operating expenditure



3 year ratios		
Network opex / metre of line	Non-network opex / connections	Total opex / kW
\$3.44 Rank: 1	\$108 Rank: 29	\$63 Rank: 29

Opex by expenditure category	Average (2020–2022)	5 year trend	% of opex
Business support	\$11.6m		33.3%
Routine & corrective maintenance	\$8.2m		23.7%
System operations & network support	\$6.7m		19.4%
Service interruptions & emergencies	\$5.4m		15.4%
Vegetation management	\$1.7m		4.9%
Asset replacement & renewal	\$1.1m		3.3%
Total operating expenditure	\$34.8m		100.0%
Related party transactions	\$12.4m		35.8%

## Lines and cables

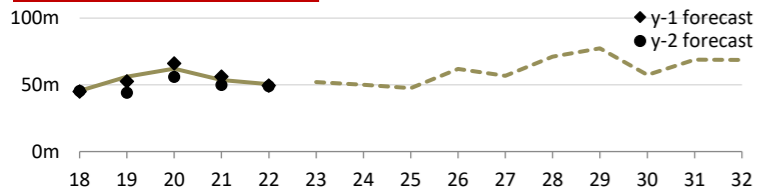
Estimated state of the assets	Distribution & LV O/H lines	Distribution & LV U/G cables	Subtransmission lines and cables	Poles
Quantity	1,664km	2,953km	198km	40,180
RAB Value	\$193.0m	\$226.7m	\$56.9m	*
Average grade	2.97	3.32	3.15	3.92
Grade 1 / 2	0.2% / 14.9%	0.0% / 3.0%	0.5% / 18.1%	0.4% / 2.1%
Unknown grade	0.0%	0.0%	0.0%	1.3%
Average age	49 years	41 years	43 years	31 years
Over generic age	312km (18.7%)	102km (3.4%)	8km (4.2%)	6,802 (16.9%)
Unknown age	0.0%	0.0%	0.0%	0.0%
5yr replacement req (est)	7.7%	1.5%	9.6%	1.5%
5yr planned replacement	1.3%	1.6%	2.1%	2.5%
Forecast repex (ave)	\$7.0m -17%	\$2.6m -33%	\$1.1m +48%	*
Repex series				*

\* RAB and expenditure on poles is included within Distribution and LV lines

## Switchgear and transformers

Estimated state of the assets	Distribution transformers	Distribution switchgear	Zone-substation transformers	Zone-substation switchgear
Quantity	4,484	6,343	52	356
RAB Value	\$133.7m	\$32.7m	<----- \$68.7m ----->	
Average grade	3.99	3.30	2.69	3.39
Grade 1 / 2	0.4% / 1.9%	1.2% / 2.8%	3.8% / 23.1%	0.0% / 2.2%
Unknown grade	0.0%	0.0%	0.0%	0.0%
Average age	28 years	31 years	53 years	39 years
Over generic age	1,484 (33.1%)	2,740 (43.2%)	47 (90.8%)	231 (64.9%)
Unknown age	0.0%	0.0%	0.0%	0.0%
5yr replacement req (est)	1.4%	2.6%	15.4%	1.1%
5yr planned replacement	5.1%	5.4%	3.9%	2.2%
Forecast repex (ave)	\$4.6m +13%	\$5.3m +253%		\$0.7m -68%
Repex series				

## Capital expenditure



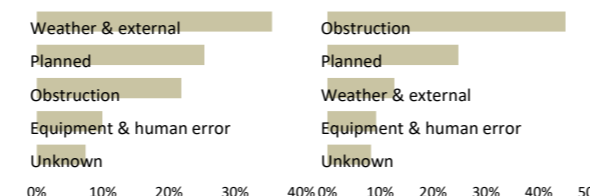
3 year ratios		
Total capex / asset base	Total capex / connections	Total capex / depreciation
7.7% Rank: 18	\$325 Rank: 24	2.01 Rank: 16

Capex by expenditure category	Average (2020–2022)	5 year trend	% of capex
Asset replacement & renewal	\$22.5m		40.6%
Consumer connection	\$15.2m		27.5%
Reliability, safety & environment	\$9.0m		16.2%
System growth	\$3.7m		6.7%
Non-network assets	\$3.3m		5.9%
Asset relocations	\$1.7m		3.1%
Total capital expenditure	\$55.4m		100.0%
Related party transactions	\$3.4m		6.1%

## Reliability

	Unplanned	Planned	Trend
Interruptions	230	241	↓
SAIDI	31.0	9.3	↓
SAIFI	0.41	0.06	↓
CAIDI	76.0	146.5	↑

## SAIDI causes



## SAIFI causes

