

Aurora Energy

drop-down to change

Explanatory documentation: [Link](#)

Summary database: [Link](#)

Performance Accessibility Tool: [Link](#)

drop-down to change

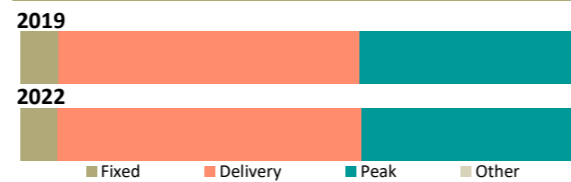
2022

Summary statistics

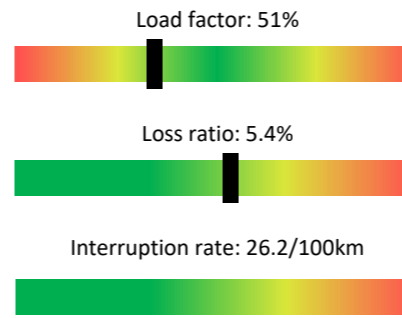
	2022 value	5 year trend	3 year CAGR	Rank
Regulatory asset base	\$645m		+9.9%	6
Regulatory profit	\$40.2m		+52.8%	7
Return on investment	7.27%		+41.7%	28
Line charge revenue	\$105.8m		+0.2%	6
Other income	\$0.7m		-3.6%	12
Customer connections	93,287		+1.3%	7
Energy delivered	1,307 GWh		-0.6%	7
Peak demand	309 MW		+1.1%	6
Network capacity	1,011 MVA		+1.1%	6
Capital expenditure	\$85.4m		+2.5%	4
Operating expenditure	\$46.3m		+0.0%	4
Capital contributions	\$13.9m		+47.0%	5
Related party transactions	\$46.8m		-4.8%	2
Line length	6,213km		-1.9%	6
Outages - SAIDI	321 minutes		-0.1%	12
Outages - SAIFI	2.67 faults		+0.6%	9

Line charge revenues

	Proportion of revenue	Charges per unit	Rank
Average daily charge	6.7%	20.7¢/ICP	27
Delivery (kWh)	54.6%	4.4¢/kWh	16
Peak based	38.8%	\$133/kW	4



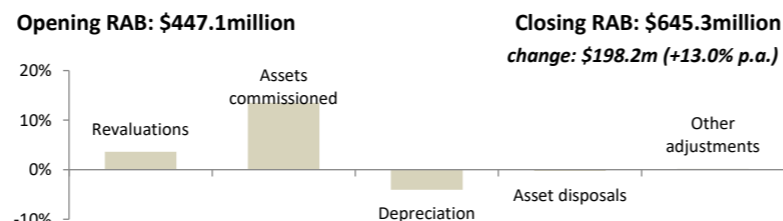
Network ratios



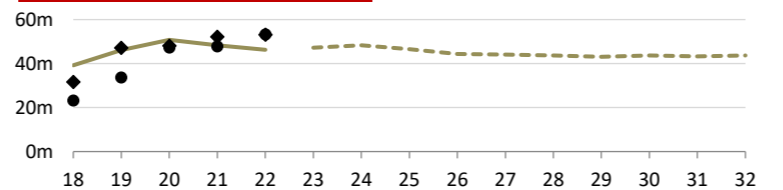
Company details

PQ Regulated?	Yes	Known Breaches	Price: No
			Quality: 2012, 2016-2020
CEO:	Richard Fletcher		
Ownership:	Dunedin City Holdings		
Head Office:	10 Halsey Street; Dunedin Central; Dunedin 9016		
Phone number:	0800 22 00 05		
Website:	www.auroraenergy.co.nz		

Annualised RAB changes (2020–2022)



Operating expenditure

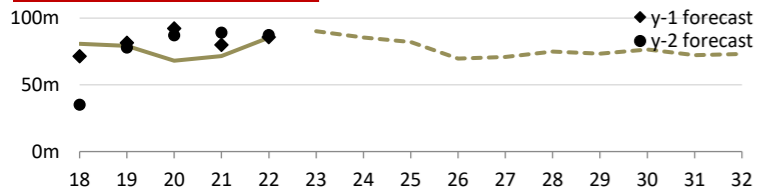


Lines and cables

Estimated state of the assets	Distribution & LV O/H lines	Distribution & LV U/G cables	Subtransmission lines and cables	Poles
Quantity	3,337km	2,286km	611km	55,237
RAB Value	\$183.6m	\$160.0m	\$60.1m	*
Average grade	4.19	4.64	4.19	3.94
Grade 1 / 2	9.8% / 4.4%	2.5% / 1.2%	12.9% / 1.3%	12.1% / 2.5%
Unknown grade	0.0%	0.0%	0.0%	0.0%
Average age	44 years	20 years	46 years	35 years
Over generic age	703km (21.1%)	92km (4.0%)	102km (16.7%)	15,177 (27.5%)
Unknown age	0.0%	0.0%	0.0%	0.0%
5yr replacement req (est)	12.0%	3.1%	13.5%	13.3%
5yr planned replacement	10.4%	2.8%	9.7%	10.1%
Forecast repex (ave)	\$26.6m +18%	\$2.2m +31%	\$3.0m -60%	*
Repex series				

* RAB and expenditure on poles is included within Distribution and LV lines

Capital expenditure



3 year ratios		
Total capex / asset base	Total capex / connections	Total capex / depreciation
13.0% Rank: 2	\$814 Rank: 5	3.77 Rank: 3

3 year ratios		
Network opex / metre of line	Non-network opex / connections	Total opex / kW
\$3.25 Rank: 2	\$309 Rank: 12	\$163 Rank: 10

Capex by expenditure category	Average (2020–2022)	5 year trend	% of capex
Asset replacement & renewal	\$44.4m		59.3%
Consumer connection	\$14.7m		19.7%
Reliability, safety & environment	\$4.8m		6.4%
Non-network assets	\$4.7m		6.3%
System growth	\$4.6m		6.1%
Asset relocations	\$1.7m		2.2%
Total capital expenditure	\$75.0m		100.0%
Related party transactions	\$28.6m		38.2%

Opex by expenditure category	Average (2020–2022)	5 year trend	% of opex
System operations & network support	\$14.3m		29.5%
Business support	\$14.1m		29.2%
Routine & corrective maintenance	\$10.4m		21.4%
Vegetation management	\$5.7m		11.8%
Service interruptions & emergencies	\$3.8m		7.7%
Asset replacement & renewal	\$0.2m		0.3%
Total operating expenditure	\$48.5m		100.0%
Related party transactions	\$19.1m		39.4%

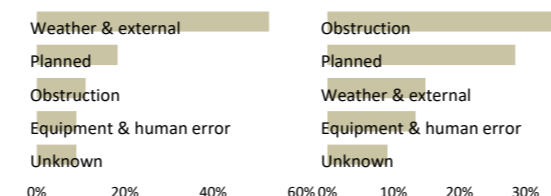
Switchgear and transformers

Estimated state of the assets	Distribution transformers	Distribution switchgear	Zone-substation transformers	Zone-substation switchgear
Quantity	7,274	8,667	67	577
RAB Value	\$70.3m	\$34.4m	<----- \$109.6m ----->	
Average grade	4.26	3.61	4.00	2.39
Grade 1 / 2	9.4% / 2.7%	21.9% / 3.5%	10.6% / 9.1%	26.8% / 2.6%
Unknown grade	0.0%	0.0%	0.0%	0.0%
Average age	21 years	21 years	32 years	32 years
Over generic age	912 (12.5%)	2,391 (27.6%)	29 (43.6%)	253 (43.9%)
Unknown age	0.0%	0.0%	0.0%	0.0%
5yr replacement req (est)	10.8%	23.7%	15.2%	28.1%
5yr planned replacement	4.2%	4.5%	16.7%	19.9%
Forecast repex (ave)	\$2.9m +10%	\$5.5m +87%	\$9.0m +91%	
Repex series				

Reliability

	Unplanned	Planned	Trend
Interruptions	570	1,060	
SAIDI	123.7	197.3	
SAIFI	1.84	0.83	
CAIDI	67.0	238.6	

SAIDI causes



SAIFI causes

