

# MainPower NZ

drop-down to change

Explanatory documentation: [Link](#)

Summary database: [Link](#)

Performance Accessibility Tool: [Link](#)

drop-down to change

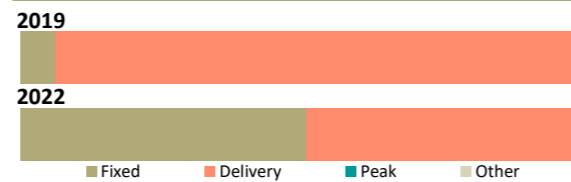
# 2022

## Summary statistics

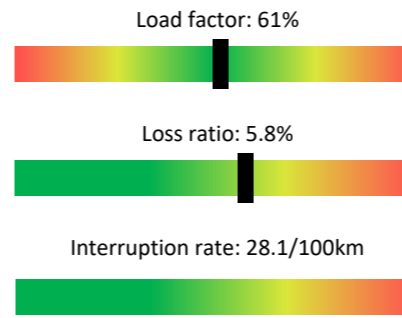
	2022 value	5 year trend	3 year CAGR	Rank
Regulatory asset base	\$282m		+2.1%	13
Regulatory profit	\$17.1m		-0.9%	19
Return on investment	6.63%		-0.9%	29
Line charge revenue	\$51.6m		-6.3%	12
Other income	\$0.3m		+41.3%	16
Customer connections	43,131		+2.9%	11
Energy delivered	624 GWh		+1.5%	13
Peak demand	124 MW		+1.8%	14
Network capacity	588 MVA		+1.7%	12
Capital expenditure	\$30.0m		+35.9%	9
Operating expenditure	\$21.4m		+4.9%	10
Capital contributions	\$5.5m		+6.5%	9
Related party transactions	\$0.0m		-100.0%	28
Line length	5,170km		+1.0%	9
Outages - SAIDI	382 minutes		+17.9%	7
Outages - SAIFI	2.48 faults		+15.3%	11

## Line charge revenues

	Proportion of revenue	Charges per unit	Rank
Average daily charge	51.3%	168.3¢/ICP	4
Delivery (kWh)	48.7%	4.0¢/kWh	21
Peak based	0.0%	N/A	24



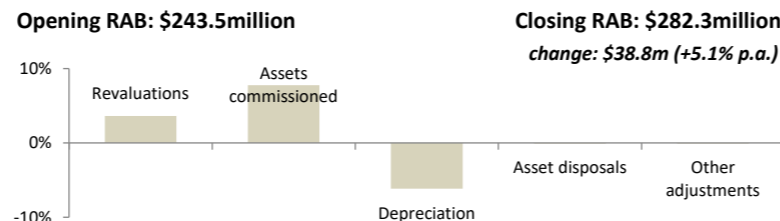
## Network ratios



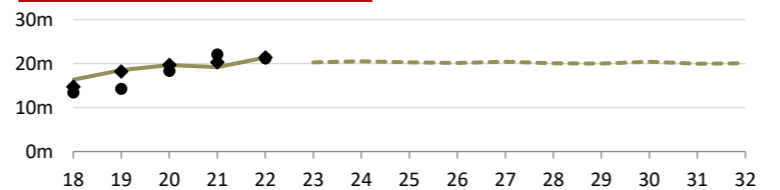
## Company details

PQ Regulated?	No
CEO:	Andy Lester
Ownership:	MainPower Trust
Head Office:	172 Fernside Road; Rangiora
Phone number:	03 311 8300
Website:	<a href="http://www.mainpower.co.nz">www.mainpower.co.nz</a>

## Annualised RAB changes (2020–2022)



## Operating expenditure

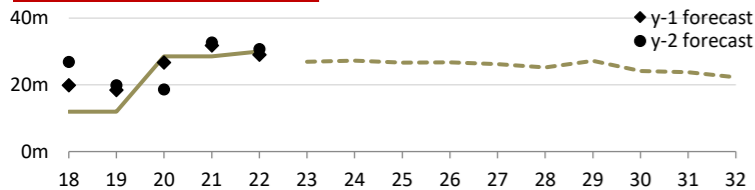


## Lines and cables

Estimated state of the assets	Distribution & LV O/H lines	Distribution & LV U/G cables	Subtransmission lines and cables	Poles
Quantity	3,711km	1,106km	391km	57,316
RAB Value	\$70.1m	\$57.6m	\$20.6m	*
Average grade	4.39	4.68	4.47	3.32
Grade 1 / 2	0.0% / 0.5%	0.0% / 0.0%	0.0% / 0.4%	1.1% / 23.2%
Unknown grade	0.0%	0.5%	0.0%	0.0%
Average age	33 years	19 years	30 years	30 years
Over generic age	75km (2.0%)	36km (3.3%)	7km (1.9%)	10,391 (18.1%)
Unknown age	0.1%	0.5%	0.0%	0.0%
5yr replacement req (est)	0.2%	0.0%	0.2%	12.7%
5yr planned replacement	0.2%	0.0%	0.4%	5.0%
Forecast repex (ave)	\$7.3m +14%	\$0.7m +184%	\$0.2m +21%	*
Repex series				*

\* RAB and expenditure on poles is included within Distribution and LV lines

## Capital expenditure



3 year ratios		
Total capex / asset base	Total capex / connections	Total capex / depreciation
10.5% Rank: 7	\$692 Rank: 11	1.86 Rank: 19

3 year ratios		
Network opex / metre of line	Non-network opex / connections	Total opex / kW
\$1.15 Rank: 28	\$339 Rank: 9	\$165 Rank: 9

Capex by expenditure category	Average (2020–2022)	5 year trend	% of capex
Asset replacement & renewal	\$10.5m		36.0%
Consumer connection	\$7.1m		24.6%
System growth	\$4.6m		15.7%
Non-network assets	\$4.3m		14.9%
Reliability, safety & environment	\$2.5m		8.7%
Asset relocations	\$0.0m		0.1%
Total capital expenditure	\$29.0m		100.0%
Related party transactions	\$0.0m		0.0%

Opex by expenditure category	Average (2020–2022)	5 year trend	% of opex
System operations & network support	\$8.9m		44.3%
Business support	\$5.3m		26.3%
Routine & corrective maintenance	\$3.7m		18.4%
Service interruptions & emergencies	\$1.3m		6.7%
Vegetation management	\$0.6m		3.2%
Asset replacement & renewal	\$0.2m		1.0%
Total operating expenditure	\$20.1m		100.0%
Related party transactions	\$0.0m		0.0%

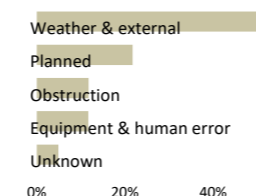
## Switchgear and transformers

Estimated state of the assets	Distribution transformers	Distribution switchgear	Zone-substation transformers	Zone-substation switchgear
Quantity	8,429	10,395	28	173
RAB Value	\$41.9m	\$13.7m	<----- \$33.2m ----->	
Average grade	3.62	4.18	3.78	3.36
Grade 1 / 2	0.0% / 19.9%	0.6% / 3.1%	0.0% / 15.0%	1.2% / 16.5%
Unknown grade	0.0%	19.2%	0.0%	0.0%
Average age	25 years	26 years	26 years	22 years
Over generic age	1,481 (17.6%)	3,087 (29.7%)	10 (34.3%)	42 (24.0%)
Unknown age	0.0%	0.0%	0.0%	0.0%
5yr replacement req (est)	10.0%	2.2%	7.5%	9.5%
5yr planned replacement	5.0%	3.7%	0.0%	2.2%
Forecast repex (ave)	\$1.5m +20%	\$0.3m -81%		\$0.2m -51%
Repex series				

## Reliability

	Unplanned	Planned	Trend
Interruptions	871	582	↑
SAIDI	255.4	126.4	↑
SAIFI	1.93	0.55	↑
CAIDI	132.2	230.2	↑

## SAIDI causes



## SAIFI causes

