

# Network Tasman

[Excel workbook](#)

Explanatory documentation: [Link](#)

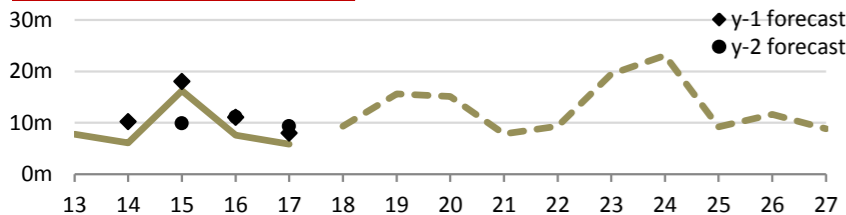
Summary database: [Link](#)

2017

## Summary statistics

	2017 value	5 year trend	3 year CAGR	Rank
Regulatory asset base	\$165m		+1.2%	19
Regulatory profit	\$16.1m		+6.5%	13
Return on investment	10.14%			2
Line charge revenue	\$44.3m		+2.6%	14
Other income	\$0.1m		-22.9%	21
Customer connections	39,028		+1.3%	11
Energy delivered	614 GWh		+1.4%	11
Peak demand	138 MW		-2.6%	10
Network capacity	445 MVA		+1.7%	13
Capital expenditure	\$5.9m		-1.4%	23
Operating expenditure	\$10.3m		+5.7%	17
Capital contributions	\$0.1m		-6.3%	21
Related party transactions	\$0.1m		-27.4%	28
Line length	3,581km		+1.8%	16
Outages - SAIDI	186 minutes		+12.8%	14
Outages - SAIFI	1.58 faults		+5.5%	13

## Capital expenditure



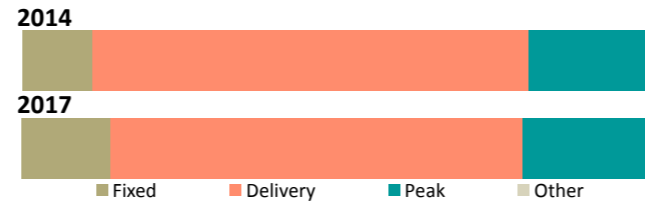
### 3 year ratios

Total capex / asset base	Total capex / connections	Total capex / depreciation
6.0% Rank: 10	\$257 Rank: 4	1.45 Rank: 8

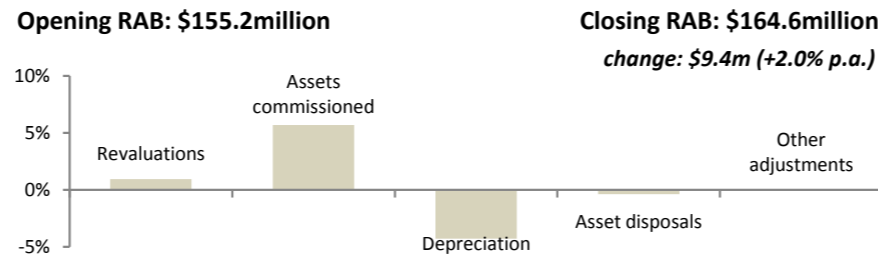
Capex by expenditure category	Average (2015-2017)	5 year trend	% of capex
Reliability, safety & environment	\$4.1m		41.8%
Asset replacement & renewal	\$1.8m		18.3%
System growth	\$1.6m		15.7%
Asset relocations	\$1.2m		12.1%
Consumer connection	\$0.8m		8.1%
Non-network assets	\$0.4m		3.9%
Total capital expenditure	\$9.9m		100.0%
Related party transactions	\$0.0m		0.0%

## Line charge revenues

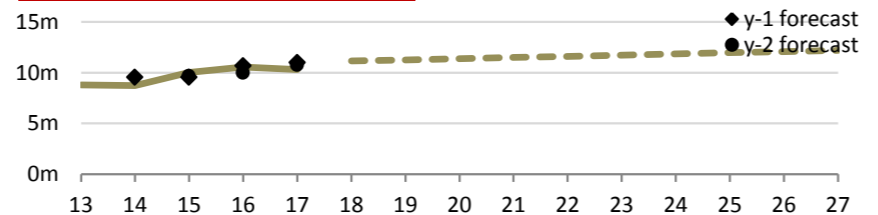
	Proportion of revenue	Charges per unit	Rank
Average daily charge	14.1%	43.8¢/ICP	11
Delivery (kWh)	65.8%	4.7¢/kWh	15
Peak based	19.7%	\$63/kW	16



## Annualised RAB changes (2015-2017)



## Operating expenditure

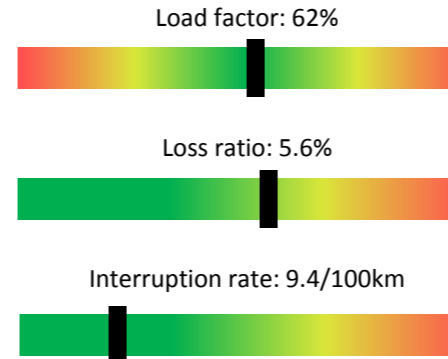


### 3 year ratios

Network opex / metre of line	Non-network opex / connections	Total opex / kW
\$1.53 Rank: 18	\$126 Rank: 6	\$73 Rank: 5

Opex by expenditure category	Average (2015-2017)	5 year trend	% of opex
Business support	\$2.8m		27.6%
Asset replacement & renewal	\$2.2m		21.1%
System operations & network support	\$2.0m		19.4%
Routine & corrective maintenance	\$1.6m		15.2%
Vegetation management	\$0.9m		8.7%
Service interruptions & emergencies	\$0.8m		7.9%
Total operating expenditure	\$10.3m		100.0%
Related party transactions	\$0.0m		0.0%

## Network ratios



## Company details

PQ Regulated?	Yes	Price breach: No
		Quality breach: No
CEO:	Oliver Kearney	
Ownership:	Network Tasman Trust	
Head Office:	52 Main Road, Hope; Nelson	
Phone number:	03 989 3600	
Website:	<a href="http://www.networktasman.co.nz">www.networktasman.co.nz</a>	

## Lines and cables

Estimated state of the assets				
	Distribution & LV O/H lines	Distribution & LV U/G cables	Subtransmission lines and cables	Poles
Quantity	2,397km	861km	311km	27,895
RAB Value	\$24.4m	\$52.9m	\$17.6m	*
Average grade	3.74	3.90	3.77	3.66
Grade 1 / 2	0.0% / 3.2%	0.0% / 0.5%	0.0% / 0.0%	0.0% / 1.9%
Unknown grade	0.0%	0.0%	0.0%	0.0%
Average age	48 years	21 years	52 years	49 years
Over generic age	719km (30.0%)	0km (0.0%)	173km (55.8%)	9,652 (34.6%)
Unknown age	0.2%	1.6%	0.3%	2.7%
5yr replacement req (est)	1.6%	0.2%	0.0%	0.9%
5yr planned replacement	4.2%	0.9%	0.0%	2.8%
Forecast repex (ave)	\$1.3m +25%	\$0.9m +8052%	\$0.3m +1375%	*
Repex series				

\* RAB and expenditure on poles is included within Distribution and LV lines

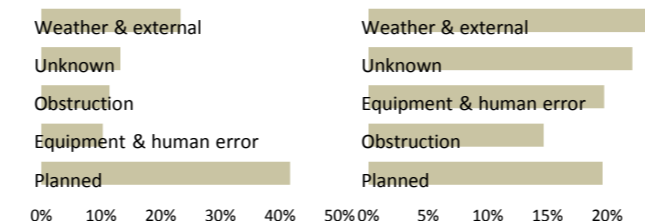
## Switchgear and transformers

Estimated state of the assets				
	Distribution transformers	Distribution switchgear	Zone-substation transformers	Zone-substation switchgear
Quantity	4,504	1,607	25	242
RAB Value	\$23.1m	\$7.6m	<----- \$22.1m ----->	
Average grade	3.63	3.47	3.30	3.95
Grade 1 / 2	0.0% / 2.5%	0.0% / 7.9%	0.0% / 0.0%	0.0% / 0.4%
Unknown grade	0.0%	0.0%	0.0%	0.0%
Average age	30 years	12 years	30 years	23 years
Over generic age	979 (21.7%)	28 (1.7%)	9 (36.0%)	35 (14.5%)
Unknown age	7.6%	57.6%	0.0%	14.5%
5yr replacement req (est)	1.3%	3.9%	0.0%	0.2%
5yr planned replacement	2.5%	7.9%	15.0%	1.2%
Forecast repex (ave)	\$0.3m +6%	\$0.0m -99%		\$0.7m +289%
Repex series				

## Reliability

	Unplanned	Planned	Trend
Interruptions	163	173	↑
SAIDI	115.7	70.0	↑
SAIFI	1.29	0.28	↑
CAIDI	89.6	247.3	↑

### SAIDI causes



### SAIFI causes

